



EGIL ENG & CO. AS

- A PART OF ADDTECH GROUP

MARINEHYDRAULIKK



2021 HURTIGPRISLISTE

VI FINNER FREM TIL DET DU TRENGER - *FORT!*

FASTE PUMPER

VARIABLE PUMPER

MOTORER

CLUTCHER

VENTILER

EL. STYRING

VANNKJØLERE

FILTER

VANNPUMPER

SYLINDRE

AGGREGATER

SYSTEMER



EGILENG & CO. AS

HYDRAULIKK - MEKANIKK - FILTER

Tlf.: 22 90 05 60 - <https://egileng.no>

Kjære kunde!

Vi har utarbeidet en hurtigprisliste med noen utvalgte hydrauliske komponenter og systemer som ofte brukes på ulike yrkesbåter i marine sektoren

Med vår brede kompetanse, gode produkter, høy tilgjengelighet og skreddersydde integrerte systemer. Ønsker vi å være en foretrukken leverandør av hydraulikk komponenter.

Vårt komplette utvalg av hydraulikk produkter presenteres på våre hjemmesider:

<https://egileng.no>

<https://webshop.egileng.no>

Hvis ønskelig kan Katalogen tilsendes i papirformat.
Listepris(veiledende utsalgspris) er oppgitt i NOK uten MVA.

Med vennlig hilsen

Egil Eng & Co AS

Vi reserverer oss for eventuelle trykkfeil.

Vi tar forbeholdt for eventuelle prisendringer.

INNHOOLD

1. Tannhjulspumper og mekaniske koplinger

- Tannhjulspumper
- Støttelager
- Mekaniske koplinger



2. Variable stempelpumper

- Variable pumper SAE-B flens
- Variable pumper SAE-C flens
- Variable pumper SAE-D flens
- Tilbehør



3. Oljemotorer og svingkrans



4. Radialstempelmotorer



5. Clutcher

- Clutcher for SAE-B flens
- Clutcher for SAE-C flens
- Tilbehør



6. Retningsventil PVG 32

- Ferdigsammenbygventiler
- Komponentliste
- Dreiesleideventiler



7. Manuelle retningsventiler



8. Styring Universal

EGIL ENG & CO. AS

JERNKROKEN 7 - 0976 OSLO - TLF. 22 90 05 60 - FAX. 22 16 15 55

9. Vann/oljekjølere



10. Filter og tanktilbehør



11. Aggregater

- Miniaggregater 12/24VDC
- Aggregater med aluminiumstank
- Aggregater med stål-tank
- Kranaggregater
- Aggregater for styremaskin

EGIL ENG & CO. AS

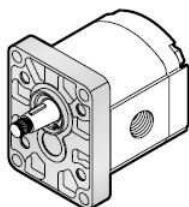
JERNKROKEN 7 - 0976 OSLO - TLF. 22 90 05 60 - FAX. 22 16 15 55

1. Tannhjulpumper og mekaniske koplinger

Tannhjulpumper

Gruppe 1

Standard



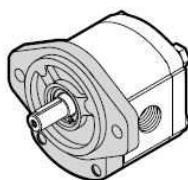
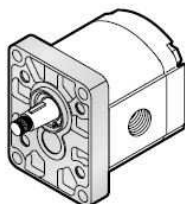
Roquet

Varenummer	Beskrivelse	Fortrengnings - volum [cm ³]	Listepris
RQ1L01.5DE10R	Tannhjuls pumpe - gr.1	1	2 740
RQ1L03DE10R	Tannhjuls pumpe - gr.1	2	2 740
RQ1L05DE10R	Tannhjuls pumpe - gr.1	3,3	2 808
RQ1L07.5DE10B	Tannhjuls pumpe - gr.1	5	2 903
RQ1L010DE10B	Tannhjuls pumpe - gr.1	6,6	2 903

Gruppe 2

Standard

SAE A



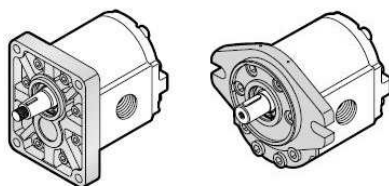
Roquet

Varenummer	Beskrivelse	Fortrengnings - volum [cm ³]	Listepris
RQ1L06DE10B	Tannhjuls pumpe - gr.2	4	3 605
RQ1L09DE10B	Tannhjuls pumpe - gr.2	6	3 605
RQ1L12DE10B	Tannhjuls pumpe - gr.2	8	3 706
RQ1L16DE10B	Tannhjuls pumpe - gr.2	10,6	3 811
RQ1L22DE10B	Tannhjuls pumpe - gr.2	14,6	3 811
RQ1L27DE10B	Tannhjuls pumpe - gr.2	18	4 058
RQ1L35DE10B	Tannhjuls pumpe - gr.2	23,3	4 253
RQ1L40DE10B	Tannhjuls pumpe - gr.2	26,6	4 307

Gruppe 3

Standard

SAE B

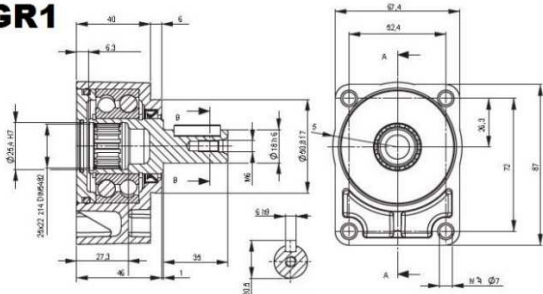


Varenummer	Beskrivelse	Fortrengnings-volum [cm ³]	Listepris
RQ1PLA36DE10B	Tannhjuls pumpe - gr.3	24	6 800
RQ1PLA45DE10B	Tannhjuls pumpe - gr.3	30	7 046
RQ1PLA54DE10B	Tannhjuls pumpe - gr.3	36	7 046
RQ1PLA66DE10B	Tannhjuls pumpe - gr.3	44	7 137
RQ1PLA84DE10B	Tannhjuls pumpe - gr.3	56	7 137

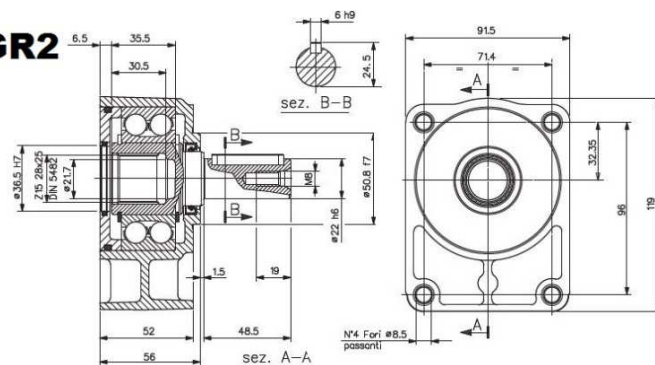
*For alle pumpestørrelser kan vi tilby et bredt utvalg flenser og aksler. Ta kontakt for pris og leveringstid.

Støttelager

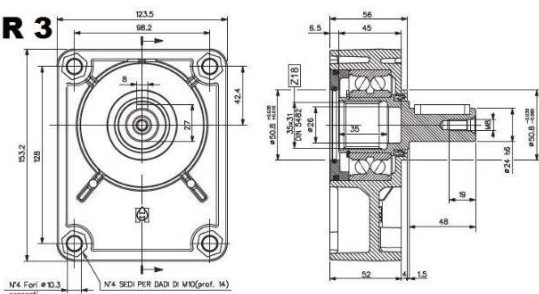
GR1



GR2

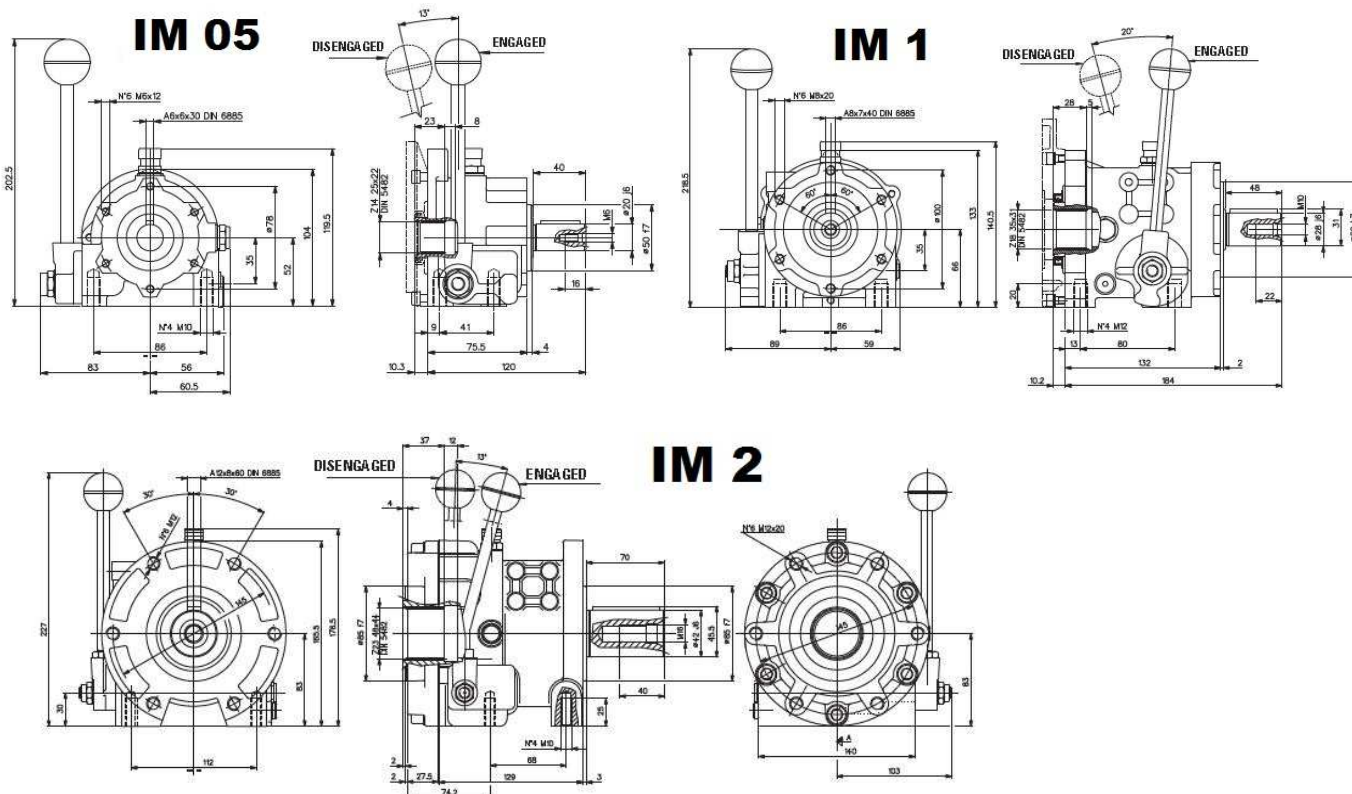


GR 3



Varenummer	Beskrivelse	Type	Listepris
HO6610100010AA	Støttelager for pumpe gr.1	Med sylindrisk aksel ø 18	1 588
HO6610200010BD	Støttelager for pumpe gr.2	Med sylindrisk aksel ø 18	1 802
HO6610250020BD	Støttelager for pumpe gr.2	Med sylindrisk aksel ø 22	1 973
HO6610300010CD	Støttelager for pumpe gr.3	Med sylindrisk aksel ø 24	2 746

Mekaniske koplinger



Varenummer	Beskrivelse	Type	Listepris
HO6710203000BA	HI-20/R-AB, Dreiemoment 90 N Aksel Ø20mm (tilsvarer IM05)	For pumpe gr.1+2 Reversibel	6 375
HO6710301000CB	HI-30/D-C, Dreiemoment 185 N Aksel Ø28mm (tilsvarer IM1)	For pumpe gr.2+3 Høyre	7 384
HO6710302000CB	HI-30/S-C, Dreiemoment 185 N Aksel Ø28mm (tilsvarer IM1)	For pumpe gr.2+3 Venstre	7 384
HO6710403000GA	HI-40/R-Q, Dreiemoment 580 N Aksel Ø42mm (tilsvarer IM2)	Universal (flens velges) Reversibel	17 228
HO6710401000EB	HI-40/D-E, Dreiemoment 580 N Aksel Ø42mm (tilsvarer IM2)	Universal (flens velges) Høyre	17 228
HO6710402000CB	HI-40/S-C, Dreiemoment 580 N Aksel Ø42mm (tilsvarer IM2)	Universal (flens velges) Venstre	17 228

Mekaniske koblinger for montering på dieselmotor (PTO)



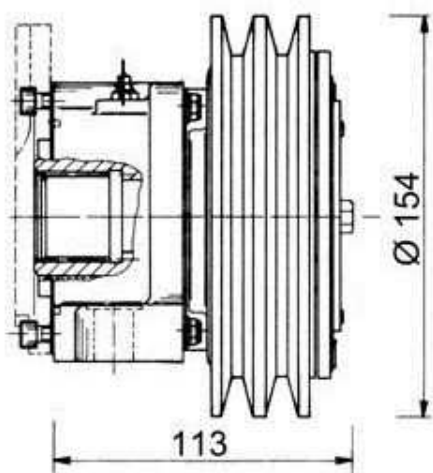
SAE-A



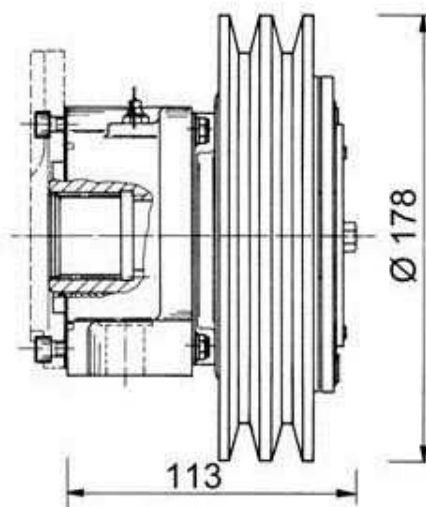
SAE-B

Varenummer	Beskrivelse	Type	Listepris
EEDT12100001SAEA	Mekanisk kobling IM 05 CD SAE-A 9T, 2 bolt	For pumpe - gr.1+2 reversibel	17 111
SCL2PGSAEB	Mekanisk kobling 2PG/ SAE B clutch 13T, 2 bolt	For pumpe - gr.3 høyre	21 547

Elektromagnetiske koblinger



Gruppe 2



Gruppe 3

Varenummer	Beskrivelse	Type	Listepris
HO6720103012BA	12V med reimhjul - Ø 154	For pumpe - gr.1+2	9 900
HO6720103024BA	24V med reimhjul - Ø 154	For pumpe - gr.1+2	9 900
HO67200000001A	12V med reimhjul - Ø 178	For pumpe - gr.2+3	10 689
HO67200000002A	24V med reimhjul - Ø 178	For pumpe - gr.2+3	10 689

2. Variable Stempelpumper

SAE-B flens, 13-tenner



K/L Frame



Varenummer	Beskrivelse	Fortrengningsvolum [cm ³]	Retning
SDK2L030CLS2620C2MP	L LS Z13 SAE-B - porter bak	30	Venstre
SDK2R030CLS2620C2MP	R LS Z13 SAE-B - porter bak	30	Høyre
SDK2L045CLS2620C2MP	L LS Z13 SAE-B - porter bak	45	Venstre
SDK2R045CLS2620C2MP	R LS Z13 SAE-B - porter bak	45	Høyre

*pris per forespørsel

SAE-B flens, 13-tenner



Varenummer	Beskrivelse	Fortrengningsvolum [cm ³]	Retning	Listepris
HPA3044RB9SLL0	H LS Z13 SAE-B	44	Høyre	23 368
HP65RB9RLL0LAKK	H LS Z13 SAE-B	65	Høyre	28 525

SAE-B flens, 13-tenner



J Frame



Varenummer	Beskrivelse	Fortrengningsvolum [cm ³]	Retning
SDJRL45BBS3120NNN3C2	L LS Z13 SAE-B, sideporter	45	Venstre
SDJRR45BBS3120NNN3C2	R LS Z13 SAE-B, sideporter	45	Høyre
SDJRL060BLS2520C2NZ	L LS Z13 SAE-B, porter bak	60	Venstre
SDJRR060BLS2520C2NZ	R LS Z13 SAE-B, porter bak	60	Høyre
SDJRL060BBS2520C2RF	L LS Z13 SAE-B, sideporter	60	Venstre
SDJRR060BBS2520C2RF	R LS Z13 SAE-B, sideporter	60	Høyre
SDJRL075CLS2520C3RF	L LS Z13 SAE-B, sideporter	75	Venstre
SDJRR075CLS2520C3RF	R LS Z13 SAE-B, sideporter	75	Høyre

* Pris per forespørsel

SAE-C flens, 14-tenner



F frame



Varenummer	Beskrivelse	Fortrengningsvolum [cm ³]	Retning
SDFRL074BBS3120S1	L LS Z14 SAE-C, sideporter	74	Venstre
SDFRR074BBS3120S1	R LS Z14 SAE-C, sideporter	74	Høyre

*Pris per forespørsel

SAE-C flens, 14-tenner



E Frame

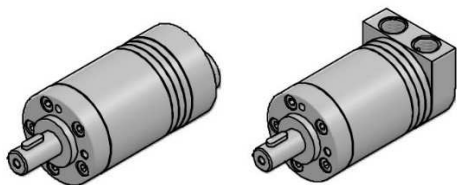


Varenummer	Beskrivelse	Fortrengningsvolum [cm ³]	Retning
SDERL100BBS3120S1	L LS Z14 SAE-C, sideporter	100	Venstre
SDERR100BBS3120S1	R LS Z14 SAE-C, sideporter	100	Høyre
SDERL130BLS2520S1	L LS Z14 SAE-C, sideporter	130	Venstre
SDERR130BLS2520S1	R LS Z14 SAE-C, sideporter	130	Høyre
SDERL147CLS2620S1	L LS Z14 SAE-C, sideporter	147	Venstre
SDERR147CLS2620S1	R LS Z14 SAE-C, sideporter	147	Høyre

*Pris per forespørsel

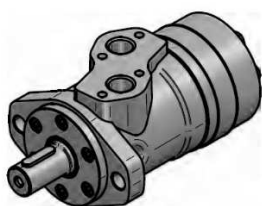
3. Oljemotorer

MC-M (tilsvarer OMM)



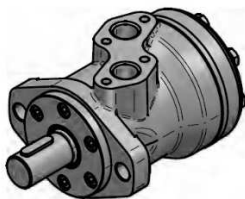
Varenummer	Beskrivelse	Fortrengningsvolum [cm ³]	Listepris
CTMCM00008C0	G.rotor MC-M 08 C bakport, aksel ø16mm	8	2 905
CTMCM00S08C0	G.rotor MC-MS 08 C sideport, aksel ø16mm	8	2 905
CTMCM00012C0	G.rotor MC-M 12 C bakport, aksel ø16mm	12	2 906
CTMCM00S12C0	G.rotor MC-MS 12 C sideport, aksel ø16mm	12	2 906
CTMCM00020C0	G.rotor MC-M 20 C bakport, aksel ø16mm	20	2 970
CTMCM00S20C0	G.rotor MC-MS 20 C sideport, aksel ø16mm	20	2 970
CTMCM00032C0	G.rotor MC-M 32 C bakport, aksel ø16mm	32	3 035
CTMCM00S32C0	G.rotor MC-MS 32 C sideport, aksel ø16mm	32	3 035
CTMCM00040C0	G.rotor MC-M 40 C bakport, aksel ø16mm	40	3 101
CTMCM00S40C0	G.rotor MC-MS 40 C sideport, aksel ø16mm	40	3 101
CTMCM00050C0	G.rotor MC-M 50 C bakport, aksel ø16mm	50	3 231
CTMCM00S50C0	G.rotor MC-MS 50 C sideport, aksel ø16mm	50	3 231

MC-PN (tilsvarer OMP)



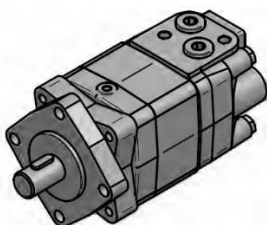
Varenummer	Beskrivelse	Fortrengningsvolum [cm ³]	Listepris
CTMCPN050CD0	G.rotor MC-PN 050 CD, Aksel ø25mm	50	3 170
CTMCPN080CD0	G.rotor MC-PN 080 CD, Aksel ø25mm	80	3 236
CTMCPN100CD0	G.rotor MC-PN 100 CD, Aksel ø25mm	100	3 302
CTMCPN125CD0	G.rotor MC-PN 125 CD, Aksel ø25mm	130	3 368
CTMCPN160CD0	G.rotor MC-PN 160 CD, Aksel ø25mm	160	3 434
CTMCPN200CD0	G.rotor MC-PN 200 CD, Aksel ø25mm	200	3 534
CTMCPN250CD0	G.rotor MC-PN 250 CD, Aksel ø25mm	250	3 599
CTMCPN315CD0	G.rotor MC-PN 315 CD, Aksel ø25mm	315	3 762
CTMCPN400CD0	G.rotor MC-PN 400 CD, Aksel ø25mm	400	3 831

MC-RN (tilsvarer OMR)



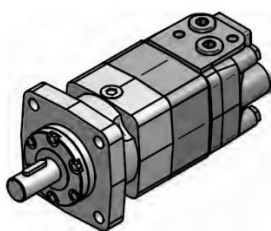
Varenummer	Beskrivelse	Fortrengningsvolum [cm ³]	Listepris
CTMCRN050CD0	G.roller MC-RN 050 CD, aksel ø25mm	50	3 806
CTMCRN080CD0	G.roller MC-RN 080 CD, aksel ø25mm	80	3 480
CTMCRN100CD0	G.roller MC-RN 100 CD, aksel ø25mm	100	3 939
CTMCRN125CD0	G.roller MC-RN 125 CD, aksel ø25mm	125	4 009
CTMCRN160CD0	G.roller MC-RN 160 CD, aksel ø25mm	160	4 112
CTMCRN200CD0	G.roller MC-RN 200 CD, aksel ø25mm	200	4 248
CTMCRN250CD0	G.roller MC-RN 250 CD, aksel ø25mm	250	4 286
CTMCRN315CD0	G.roller MC-RN 315 CD, aksel ø25mm	315	4 357
CTMCRN400CD0	G.roller MC-RN 400 CD, aksel ø25mm	400	4 510

MCSY (tilsvarer OMS)



Varenummer	Beskrivelse	Fortrengningsvolum [cm ³]	Listepris
CTMCSY080C00	G.roller MCSY 080 CD, Aksel ø32mm	80	6 431
CTMCSY100C00	G.roller MCSY 100 CD, Aksel ø32mm	100	6 634
CTMCSY125C00	G.roller MCSY 125 CD, Aksel ø32mm	125	6 705
CTMCSY160C00	G.roller MCSY 160 CD, Aksel ø32mm	160	6 845
CTMCSY200C00	G.roller MCSY 200 CD, Aksel ø32mm	200	6 982
CTMCSY250C00	G.roller MCSY 250 CD, Aksel ø32mm	250	7 055
CTMCSY315C00	G.roller MCSY 315 CD, Aksel ø32mm	315	7 533
CTMCSY400C00	G.roller MCSY 400 CD, Aksel ø32mm	400	7 805

MPT (tilsvarer OMT)



Varenummer	Beskrivelse	Fortrengningsvolum [cm ³]	Listepris
CTMPT160NC40	G.roller MPT 160 CD, Aksel ø40mm	160	15 748
CTMPT200NC40	G.roller MPT 200 CD, Aksel ø40mm	200	16 084
CTMPT250NC40	G.roller MPT 250 CD, Aksel ø40mm	250	16 597
CTMPT315NC40	G.roller MPT 315 CD, Aksel ø40mm	315	17 025
CTMPT400NC40	G.roller MPT 400 CD, Aksel ø40mm	400	17 679
CTMPT500NC40	G.roller MPT 500 CD, Aksel ø40mm	500	18 894

ARF (med brems)



Varenummer	Beskrivelse	Fortrengningsvolum [cm ³]
SD1516461	G.roller ARF(OMRF) med brems, Aksel ø25mm	80
SD1516462	G.roller ARF(OMRF) med brems, Aksel ø25mm	100
SD1516463	G.roller ARF(OMRF) med brems, Aksel ø25mm	125
SD1516464	G.roller ARF(OMRF) med brems, Aksel ø25mm	160
SD1516465	G.roller ARF(OMRF) med brems, Aksel ø25mm	200
SD1516466	G.roller ARF(OMRF) med brems, Aksel ø25mm	250
SD1516467	G.roller ARF(OMRF) med brems, Aksel ø25mm	315
SD1516468	G.roller ARF(OMRF) med brems, Aksel ø25mm	375

*pris per forespørsel

Svingkrans med gir.

Svingkransene har anslutning for oljemotor G-roller eller G-rotor, og flens SAE A, 25mm aksel.

Produktet kan leveres i forskjellige størrelser.



Varenummer	Kulebane	Utvexsling	Hastighet [rpm]	Inngående moment kontinuerlig [Nm]	Utgående moment kontinuerlig [Nm]	Listepris
SKGRCDK02560	158mm	1:46	200	105	3 060	31 685
SKGRADK02280	160mm	1:63	215	32	1 410	25 708
SKGRXDK03160	224mm	1:61	200	105	4 480	35 869
SKGRXDK04370	334mm	1:85	200	105	6 250	34 384
SKGRRDK07440	627mm	1:104	150	195	14 200	83 408

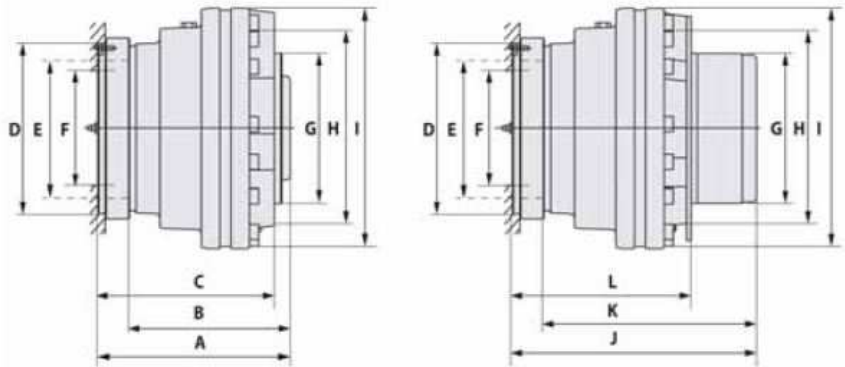
4. Radialstempelmotorer

Black Bruin BBC Motor

Radial Piston Motor with Superior Performance



Black Bruin BBC radial piston motor provides excellent efficiency up to max speeds. Multi-speed BBC motor is not restricted by preferred rotational direction and thus provides the same top performance in wide speed range to both clockwise and counter-clockwise directions. The fail-safe mechanical freewheeling with in-built freewheeling valve or 4-speed function are just couple of the many features that can be added into the versatile BBC package.



Dimensions:

Model	Weight without brake kg	A mm	Rotating part B mm	C mm	D mm	E mm	F mm	G mm	H mm	I mm	J mm	Rotating part K mm	L mm	Weight with brake kg
BBC 01	41	234	193	210	172	140 12 x M12	117	175,8	225 5 x M22 x 1,5	263	299	258	213	47
BBC 02	62	254	212	233	200	160 8 x M16	135	175,8	225 5 x M22 x 1,5	282	322	280	236	71
BBC 03	80	267,5	223	241	216	175 10 x M16	150	220,8	275 8 x M20 x 1,5	315	331	286,5	241	92
BBC 04	103	281	234	246	216	175 12 x M16	150	220,8	275 8 x M22 x 1,5	343	350	303,5	251	118
BBC 05	138	298	254	259	240	200 12 x M20 x 1,5	166	280,8	335 10 x M22 x 1,5	376	383	339	263	159
BBC 06	180	328	279,5	290	262	215 12 x M20 x 1,5	185	280,8	335 10 x M22 x 1,5	420	423	374,5	295	215
BBC 07	300	387	332,5	338	310	260 12 x M20 x 1,5	220	370,8	425 10 x M22 x 1,5	492	535	480,5	338	400



Black Bruin

Motor class size		BBC 01					BBC 02					BBC 03				
Percentual displacement	%	90	100	110	120	130	90	100	110	120	130	90	100	110	120	130
Displacement	ccm	462	513	564	615	667	705	783	862	940	1018	909	1010	1111	1212	1313
Peak pressure	bar	450	450	450	425	400	450	450	450	425	400	450	450	450	425	400
- Peak torque	Nm	3045	3380	3715	3830	3910	4645	5160	5680	5850	5965	5990	6655	7320	7545	7690
Intermittent* pressure	bar	400	400	400	375	350	400	400	400	375	350	400	400	400	375	350
- Intermittent torque	Nm	2710	3005	3305	3380	3420	4130	4585	5050	5165	5220	5325	5915	6510	6655	6730
Power																
- Max. displacement	kW			32					42					50		
- 1/2 displacement	kW			21					28					33		
Max. speed																
- Working	rpm	260	234	213	195	180	223	201	182	167	154	206	186	169	155	143
- 1/2 displacement	rpm	364	328	298	278	252	318	286	260	238	220	290	261	238	218	201
- Freewheeling	rpm			600					600					600		
Brake (multi-disc)																
- Brake torque	Nm			4300					6560					8470		
- Releasing pressure	bar			16					16					16		
- Max. brake pressure	bar			30					30					30		

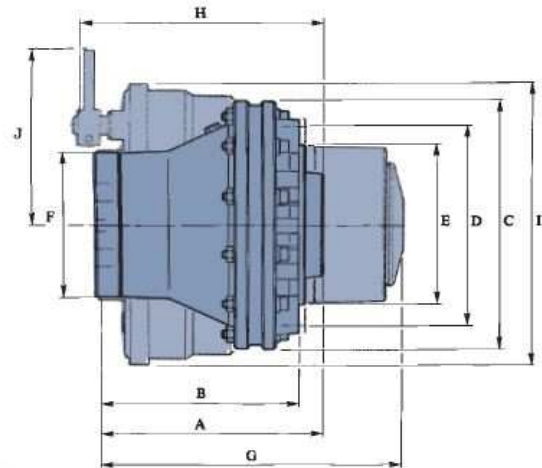
Motor class size		BBC 04					BBC 05				
Percentual displacement	%	90	100	110	120	130	90	100	110	120	130
Displacement	ccm	1170	1300	1430	1560	1690	1572	1747	1922	2096	2271
Peak pressure	bar	450	450	450	425	400	450	450	450	425	400
- Peak torque	Nm	7710	8670	9425	9710	9900	10360	11515	12670	13045	13305
Intermittent* pressure	bar	400	400	400	375	350	400	400	400	375	350
- Intermittent torque	Nm	6855	7615	8380	8570	8665	9210	10235	11260	11510	11640
Power											
- Max. displacement	kW			59					72		
- 1/4, 1/2, 3/4 displacement	kW			26/39/49					32/48/60		
Max. speed											
- Working	rpm	189	170	155	142	131	172	155	141	129	119
- 3/4 displacement	rpm	225	202	184	169	156	205	185	168	154	142
- 1/2 displacement	rpm	267	240	218	200	185	244	220	200	183	169
- 1/4 displacement	rpm	356	320	291	267	246	326	293	266	244	226
- Freewheeling	rpm			500					500		
Brake (multi-disc)											
- Brake torque	Nm			10900					20600		
- Releasing pressure	bar			16					16		
- Max. brake pressure	bar			30					30		

Motor class size		BBC 06					BBC 07				
Percentual displacement	%	90	100	110	120	130	90	100	110	120	130
Displacement	ccm	2214	2460	2706	2952	3198	3825	4250	4675	5100	5525
Peak pressure	bar	450	450	450	425	400	450	450	450	425	400
- Peak torque	Nm	14590	16215	17835	18375	18735	25200	28000	30800	31740	32360
Intermittent* pressure	bar	400	400	400	375	350	400	400	400	375	350
- Intermittent torque	Nm	12970	14410	15855	16215	16395	22400	24890	27380	28000	28310
Power											
- Max. displacement	kW			91					125		
- 1/4, 1/2, 3/4 displacement	kW			40/60/76					54/81/104		
Max. speed											
- Working	rpm	154	139	126	116	107	123	110	100	92	85
- 3/4 displacement	rpm	183	165	150	137	127	136	122	111	102	94
- 1/2 displacement	rpm	217	195	177	163	150	170	153	139	127	117
- 1/4 displacement	rpm	289	260	237	217	200	226	203	185	170	156
- Freewheeling	rpm			400					325		
Brake (multi-disc)											
- Brake torque	Nm			20600					42000		
- Releasing pressure	bar			16					16		
- Max. brake pressure	bar			30					30		

Black Bruin BB Motor

The Original Freewheeling Low Speed High Torque Motor

Smooth start and excellent low speed operating characteristics in compact size. Caliber-, drum- and several multi-disc brake options. Mechanical freewheeling. Flexible engineering. A solid selection for a variety of applications.



Dimensions:

Model	Weight without brake kg	Min. rim size (mm)	A mm	Without brake B mm	C mm	D mm	E mm	F mm	G mm	H mm	I mm	J Max. (mm)
BB 3	32	279,4	243	227	ø 234	ø170 6 x M16 x 1,5	ø 129,9	ø 150	364	243	ø 275	279
BB 4	50	330,2	280	262	ø 282	ø 205 6 x M18 x 1,5	ø 160,8	ø 165	420	280	ø 334	300
BB 5	85	381	312	279	ø 343	ø 275 8 x M20 x 1,5	ø 220,8	ø 200	469	342	ø 395	243
BB 6	145	457,2	336	317	ø 416	ø 335 10 x M22 x 1,5	ø 280,8	ø 240	480	-	-	-
BB 7	270	-	402	377	ø 520	ø 425 12 x M22 x 1,5	ø 370,8	ø 300	550	-	-	-

Black Bruin



Performance data

Motor class size		BB 3			BB 4			BB 5		
Displacement	ccm	250	315	400	500	630	800	1000	1250	1600
Peak pressure	bar	350	350	350	350	350	350	350	350	350
- Peak torque	Nm	1310	1650	2090	2620	3300	4190	5240	6540	8380
Intermittent* pressure	bar	300	300	300	300	300	300	300	300	300
- Intermittent torque	Nm	1120	1415	1790	2245	2825	3590	4490	5610	7180
Power										
- Max. displacement	kW	25	25	25	35	35	35	50	50	50
- 1/2 displacement	kW	13	13	13	21	21	21	30	30	30
Max. speed										
Working	rpm	400	320	250	300	240	185	200	160	125
- 1/2 displacement	rpm	600	450	375	450	360	275	300	240	185
- Freewheeling	rpm	600	600	600	600	600	600	600	600	600
Brake (multi disc)										
- Brake torque	Nm	2000	2000	2000	3700	3700	3700	8000	8000	8000
- Releasing pressure	bar	75	75	75	70	70	70	86	86	86
- Max brake pressure	bar	300	300	300	300	300	300	300	300	300

Motor class size		BB 6			BB 7		
Displacement	ccm	2000	2500	3150	4000	5000	6300
Peak pressure	bar	450	450	450	450	450	450
- Peak torque	Nm	13440	16810	21170	26890	33530	42300
Intermittent* pressure	bar	400	400	400	400	400	400
- Intermittent torque	Nm	11950	14940	18820	23900	29800	37600
Power							
- Max. displacement	kW	90	90	90	130	130	130
- 1/2 displacement		54	54	54	80	80	80
Max. speed							
Working	rpm	175	140	110	125	100	80
- 1/2 displacement	rpm	220	180	145	160	130	105
- Freewheeling	rpm	500	500	500	375	375	375
Brake (multi disc)							
- Brake torque	Nm	20000	20000	20000	40000	40000	40000
- Releasing pressure	bar	52	52	52	63	63	63
- Max brake pressure	bar	250	250	250	250	250	250

The Black Bruin Motors

Black Bruin LSHT radial piston motor line offers two series of motors: the classic BB and advanced BBC.

The Freewheeling Motor

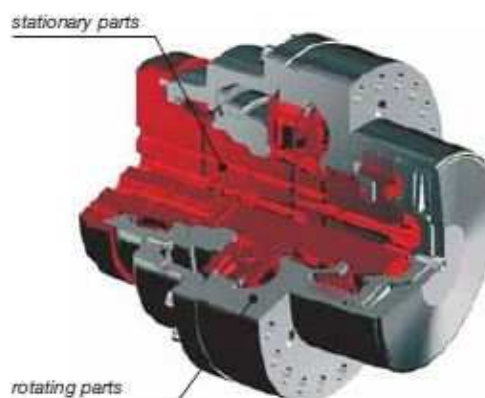
Both models feature the unmatched mechanical freewheeling. This superb feature makes the Black Bruin the option to choose for any drive application requiring high freewheel speeds.

Compact Wheel Hub Motor

Being descended from a radial piston motor originally designed to be a wheel hub, Black Bruin motor is a perfect and compact fit to any wheel. Equipped with a caliber disc brake, Black Bruin offers the shortest wheel drive package with a brake in the marketplace.

Customer Driven Motors - from engineering to end users

Let our product line grow to meet Your needs: if You can not find the exact fit from our existing line of motors, bring the challenge to us and we will give our best to provide a solution for You.



Italgroup[®]

HYDRAULIC MOTORS

ITALY

IAC Series

Radial Piston Motors
Dual displacement
Displ: 250-5400cc/rev.
Freewheeling option.



IAMD Series

Heavy Duty Radial Piston Motors
Fixed displacement
Displ: 300 – 8000cc/rev.
Power: Up to 250 kW



IAM Series

Radial Piston Motors
Fixed displacement
Displ: 80 - 8000cc/rev.
Speed: Up to 1000 rpm.



5. Clutcher



- For montering på PTO i gir-boks eller i front av dieselmotor
- Sparer energi og eliminerer varmgang ved å koble ut hydraulisk pumpe
- Mulighet for å kjøre diesel motor på høyt turtall uten å skade hydr. pumpe
- Maks moment for SAE-B clutch: 407 Nm, for SAE-C clutch: 814 Nm
- Kan leveres med miniaggregat for hydraulisk styring
- Kompakt design, egner seg perfekt for yrkesbåter og fritidsbåter.

Varenummer	Beskrivelse	Maks moment [Nm]
LOSBB330101	SAE 'B' 13T SPLINE	407
LOSCC630101	SAE 'C' 14T SPLINE	813

*pris per forespørsel

The low profile, compact

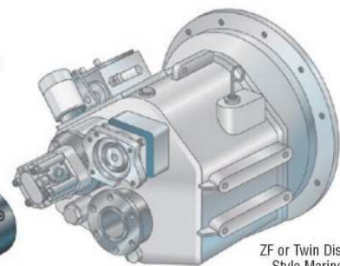
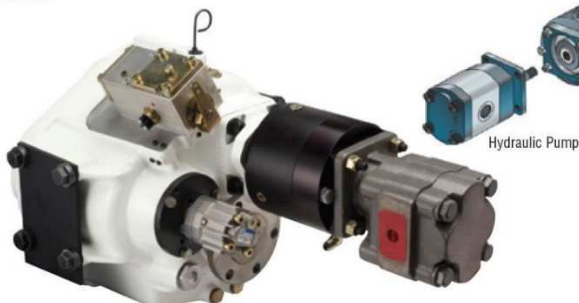
design is suitable for workboats fishing boats and pleasure craft.

Features:

- SAE 2 or 4-bolt B mount
- SAE 4-bolt C mount
- 12 or 24 Volt DC control valve system integrates with existing transmission pressure

Advantages:

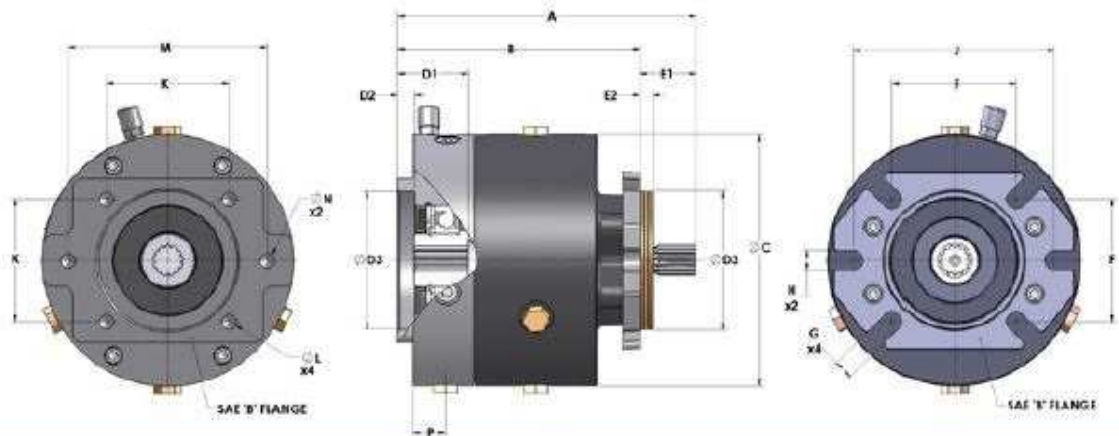
- During Maneuvering – which requires reduction of main engine speed, the PTO is used as a separate power source for bow and stern thrusters.
- Directly connects to a pump drive, which powers winches, reels, hoists, deck pressure washers and alternators.



ZF or Twin Disc®
Style Marine
Transmission



Clutch SAE 'B' 13Tenner SPLINE

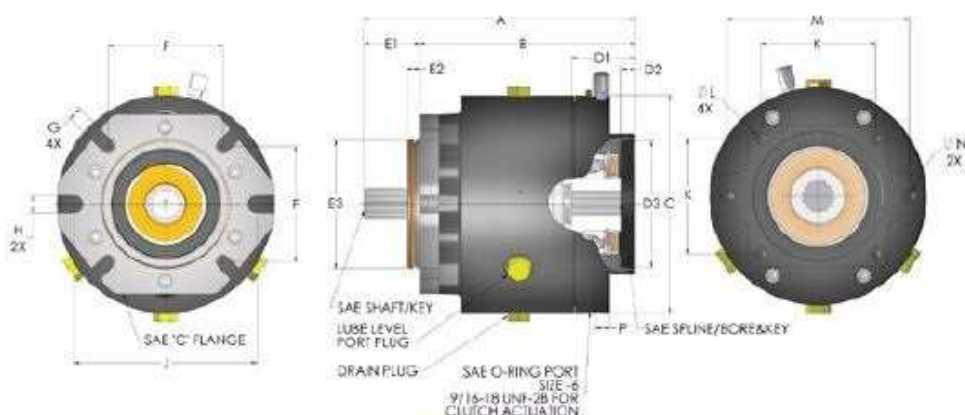


Dimensional Data *																		
Dimensions In Inches																		
8.61	6.99	7.25	2.04	0.49	4.002	1.62	0.37	3.998	3.534	0.56	0.56	5.75	3.534	1/2-13 UNC	5.75	1/2-13 UNC	0.94	
A	B	C	D1	D2	D3	E1	E2	E3	F	G	H	J	K	L	M	N	P	
218.7	177.5	184.2	51.8	12.4	101.7	41.1	9.4	101.5	89.8	14.2	14.2	146.1	89.8	1/2-13 UNC	146.1	1/2-13 UNC	23.9	
Dimensions In millimeters																		
PTO 300 Actual Static Torque****				3100 Series				3200 Series				3300 Series						
Standard Units		Lbs.-Ft.		510				510				510						
		PSI (MAX.)		120				200				320						
Metric Units		Bar (MAX.)		8.3				13.8				22.1						
		Nm		692				692				692						
PTO 300 Specifications						PTO 300 Series Output (Pump) Shaft Option***												
	U.S.			S.I.			SAE 'B' Spline 13T 16/32 DP			SAE 'B' Ø .875 x 1/4 Sq. Key								
* Rated Static Torque (Maximum)	300 ft.lbs.			407 Nm			SAE 'B-B' Spline 15T 16/32 DP			SAE 'B-B' Ø 1.000 x 1/4 Sq. Key								
Maximum HP/kW	170 HP			255 kW			PTO 300 Series Input Shaft Option***											
Maximum RPM Under Load	3000 RPM			3000 RPM														
* Recommended Engagement Speed	Idle			Idle			SAE 'B' Spline 13T 16/32 DP			SAE 'B' Ø .875 x 1/4 Sq. Key								
Rotation	Bi-rotation			Bi-rotation			SAE 'B-B' Spline 15T 16/32 DP			SAE 'B-B' Ø 1.000 x 1/4 Sq. Key								
** Maximum Actuation Pressure	120, 200 or 320 PSI			8.3, 13.8 or 22.1 bar			Notes: * Standard configuration. Modified standards available. Soft start feature may be required for engagement above machine idle RPM. ** SAE PTO 300 Series clutches are available in three (3) different actuation pressures. Refer to part number to determine model configuration. *** Contact Clutch for alternative pump shaft options. The output end of the clutch (female spline/bore) is not capable of supporting any side load. Use overhung load adapters. **** Torque ratings based on using ATF fluid as a lubricant. When selecting clutch size, it is recommended to select a clutch with at least 50% more torque than required for factor of safety.											
Min/Max Case Pressure w/Optional High Pressure Seals	7/30 PSI			0.5/2.0 bar														
Min. Flow Rate Required (Actuation)	1.5 GPM			5.6 liters/min.														
Operating Media at Clutch (Oil or Air)	Standard			Standard														
Max. Back Pressure to Tank	7 PSI			0.5 bar														
Maximum Fluid Temperature	180° F			82° C														
Displacement:	3100 Series (New/Worn)			2.56/4.88 in ³									43.6/80.0 cm ³					
	3200 Series (New/Worn)			1.71/3.14 in ³									28.0/51.5 cm ³					
	3300 Series (New/Worn)			1.00/1.84 in ³									16.4/30.2 cm ³					
Weight (Approx.)	26 lbs.			11.8 kg														



Made in Cleveland, Ohio • USA

Clutch SAE 'C' 14Tenner SPLINE



Dimensional Data *																	
Dimensions in Inches																	
10.62	8.44	8.50	2.50	0.53	5.002	2.18	0.50	4.998	4.511	0.54	0.69	7.15	4.508	1/2-13UNC	7.125	5/8-11UNC	0.55
A	B	C	D1	D2	D3	E1	E2	E3	F	G	H	J	K	L	M	N	P
269.8	214.4	215.9	63.5	13.5	127.1	55.4	12.7	126.9	114.6	13.7	17.5	181.6	114.5	1/2-13UNC	181	5/8-11UNC	14.0
Dimensions in millimeters																	

PTO 600 Actual Static Torque****		6100 Series	6200 Series	6300 Series
Standard Units	Lbs.-Fl.	912	985	985
	PSI (MAX.)	120	200	320
Metric Units	Bar (MAX.)	8.3	13.8	22.1
	Nm	1237	1336	1336

PTO 600 Specifications		
	U.S.	S.I.
* Rated Static Torque (Maximum)	600 ft.lbs.	813 Nm
Maximum HP/kW	342 HP	255 kW
* Maximum RPM Under Load	3000 RPM	3000 RPM
* Recommended Engagement Speed	Idle	Idle
Rotation	BI-rotation	BI-rotation
** Maximum Actuation Pressure	120, 200 or 320 PSI	8.3, 13.8 or 22.1bar
Min/Max Case Pressure w/Optional High Pressure Seals	7/30 PSI	0.5/2.0 bar
Min. Flow Rate Required (Actuation)	1.5 GPM	5.7 liters/min.
Operating Media at Clutch (Oil or Air)	Standard	Standard
Max. Back Pressure to Tank	7 PSI	0.5 bar
Maximum Fluid Temperature	180° F	82° C
Displacement: 6100 Series (New/Worn)	3.3/5.1 in ³	54/83.5 cm ³
6200 Series (New/Worn)	2.4/3.6 in ³	39.3/59 cm ³
6300 Series (New/Worn)	1.5/2.3 in ³	24.5/37.7 cm ³
Weight (Approx.)	47 lbs.	21 kg

PTO 600 Series Output (Pump) Shaft Option***	
SAE 'C' Spline 14T 12/24 DP	SAE 'C' Ø 1.250 x 5/16 Sq. Key
SAE 'C-C' Spline 17T 12/24 DP	SAE 'D' 13T 8/16 DP
PTO 600 Series Input Shaft Option***	
SAE 'C' Spline 14T 12/24 DP	SAE 'C' Ø 1.250 x 5/16 Sq. Key
SAE 'C-C' Spline 17T 12/24 DP	SAE 'C-C' Ø 1.500 x 3/8 Sq. Key

Notes:

* Standard configuration. Modified standards available. Soft start feature may be required for engagement above machine Idle RPM.

** SAE PTO 600 Series clutches are available in three (3) different actuation pressures. Refer to part number to determine model configuration.

*** Contact clutch for alternative pump shaft options. The output end of the clutch (female spline/bore) is not capable of supporting any side load. Use overhung load adapters.

**** Torque ratings based on using ATF fluid as a lubricant. When selecting clutch size, it is recommended to select a clutch with at least 50% more torque than required for factor of safety.



Made in Cleveland, Ohio • USA

6. Retningsventil PVG 32



Ferdig montert ventil, mekanisk betjent uten sjokkventil med: <ul style="list-style-type: none"> - Anodiserte spak-hus - Anodiserte deksler - PVP med intern pilotolje - Forsterket endeplate - Kompenseringsleide og tilbakeslagsventil. 	Beskrivelse
	1 seksjon
	2 seksjon
	3 seksjon
	4 seksjon
	5 seksjon
	6 seksjon
	7 seksjon
	8 seksjon
9 seksjon	

Hver seksjon kan leveres med:	PVB med Ls trykkjustering A/B port
	PVB med sjokkventiler på A og B port
	PVB med Ls trykkjustering og sjokkventiler på A og B port
	PVB med mekanisk raster

Samt elektrisk aktivering sleide:	PVEO On/Off anodisert
	PVEM Proporsjonal medium
	PVEH Proporsjonal high

Ta kontakt for pristilbud eller bestilling av ønsket ventil.

PVG32 komponent liste - *pris per forespørsel

Del	Beskrivelse	Art nummer
Inngangselement PVP 	Lukket senter	SD157B5111
	Åpent senter	SD157B5110
	For avlastningsventil	SD157B5113
Arbeidselement 	Med komp.	SD157B6200
	Med komp. – for sjokkventil	SD157B6230
	Med komp. – med LSA/B just.	SD157B6203
	Med komp. – og tilbakeslagsventil med LSA/B justering for sjokkventil	SD157B6233
LS avlastningsventil 	Normalt åpen 24V	SD157B4238
Spakhus 	Mekanisk aktivering anodisert	SD157B3184
Endeplate 	Utgangselement PVS1 forsterket	SD157B2014
	Utgangselement PVS med LX forbindelse	SD157B2011
	Utgangselement PVS med LX forbindelse forsterket	SD157B2015
Endedeksel 	Endedeksel for manuell betjening anodisert	SD157B0009
Sleidekontroll 	Sleidekontroll PVMR, friksjon detent	SD157B0004
Sleidekontroll elektrisk 	Sleidekontroll PVEO, On/Off 12V	SD157B4216
	Sleidekontroll PVEO, On/Off 24V	SD157B4268
	Sleidekontroll PVEM 12V medium	SD157B4116
	Sleidekontroll PVEM 24V medium	SD157B4128
	Sleidekontroll PVEH 11-32V aktiv	SD157B4032

Sleider

10 l/min syl. 4/3 uten LS justering	SD157B7000
10 l/min syl. 4/3 med LS justering	SD157B7020
10 l/min motor 4/3 uten LS justering	SD157B7100
10 l/min motor 4/3 med LS justering	SD157B7120
10 l/min enkelt virkende 3/3 uten LS justering	SD157B7200
25 l/min syl. 4/3 uten LS justering	SD157B7001
25 l/min syl. 4/3 med LS justering	SD157B7021
25 l/min motor 4/3 uten LS justering	SD157B7101
25 l/min motor 4/3 med LS justering	SD157B7121
25 l/min enkelt virkende 3/3 uten LS justering	SD157B7201
40 l/min syl. 4/3 uten LS justering	SD157B7002
40 l/min syl. 4/3 med LS justering	SD157B7022
40 l/min motor 4/3 uten LS justering	SD157B7102
40 l/min motor 4/3 med LS justering	SD157B7122
40 l/min enkelt virkende 3/3 uten LS justering	SD157B7202
65 l/min syl. 4/3 uten LS justering	SD157B7003
65 l/min syl. 4/3 med LS justering	SD157B7023
65 l/min motor 4/3 uten LS justering	SD157B7103
65 l/min motor 4/3 med LS justering	SD157B7123
65 l/min enkelt virkende 3/3 uten LS justering	SD157B7203
100 l/min syl. 4/3 uten LS justering	SD157B7004
100 l/min syl. 4/3 med LS justering	SD157B7024
100 l/min motor 4/3 uten LS justering	SD157B7104
100 l/min motor 4/3 med LS justering	SD157B7124
100 l/min enkelt virkende 3/3 uten LS justering	SD157B7204
130 l/min syl. 4/3 uten LS justering	SD157B7006
130 l/min syl. 4/3 med LS justering	SD157B7026
130 l/min motor 4/3 uten LS justering	SD157B7106
130 l/min motor 4/3 med LS justering	SD157B7126

Sjokkventiler

Sjokk/Etterfyllingsventil PVL 32 bar	SD157B2032
Sjokk/Etterfyllingsventil PVL 50 bar	SD157B2050
Sjokk/Etterfyllingsventil PVL 63 bar	SD157B2060
Sjokk/Etterfyllingsventil PVL 80 bar	SD157B2080
Sjokk/Etterfyllingsventil PVL 100 bar	SD157B2100
Sjokk/Etterfyllingsventil PVL 125 bar	SD157B2125
Sjokk/Etterfyllingsventil PVL 140 bar	SD157B2140
Sjokk/Etterfyllingsventil PVL 150 bar	SD157B2150
Sjokk/Etterfyllingsventil PVL 160 bar	SD157B2160
Sjokk/Etterfyllingsventil PVL 175 bar	SD157B2175
Sjokk/Etterfyllingsventil PVL 190 bar	SD157B2190
Sjokk/Etterfyllingsventil PVL 210 bar	SD157B2210
Sjokk/Etterfyllingsventil PVL 230 bar	SD157B2230
Sjokk/Etterfyllingsventil PVL 240 bar	SD157B2240
Sjokk/Etterfyllingsventil PVL 250 bar	SD157B2250
Sjokk/Etterfyllingsventil PVL 265 bar	SD157B2265
Sjokk/Etterfyllingsventil PVL 280 bar	SD157B2280
Sjokk/Etterfyllingsventil PVL 300 bar	SD157B2300
Sjokk/Etterfyllingsventil PVL 320 bar	SD157B2320
Sjokk/Etterfyllingsventil PVL 350 bar	SD157B2350

Etterfyllingsventil 	Etterfyllingsventil	SD157B2001
Plugg 	Plugg for sjokkventil PVLA63, brukes for enkeltvirkende sleider	SD157B2002
Boltesett 	Boltesett for 1 element	SD157B8001
	Boltesett for 2 elementer	SD157B8002
	Boltesett for 3 elementer	SD157B8003
	Boltesett for 4 elementer	SD157B8004
	Boltesett for 5 elementer	SD157B8005
	Boltesett for 6 elementer	SD157B8006
	Boltesett for 7 elementer	SD157B8007
	Boltesett for 8 elementer	SD157B8008
	Boltesett for 9 elementer	SD157B8009
Paknings sett	For arbeidselement PVB	SD157B6999
	For Inngangselement PVP	SD157B5999
	For sleidekontroll PVEH/S	SD157B4997
	For spakhus	SD157B3999
	Mellom arbeidselementer PVB	SD157B8999
LS kompensator 	LS kompensator ventil	SD158H8055
Joystick 	Joystick PVREL 1 proporsjonal	SD155U2605
	Joystick PVREL 1 prop. med låsing	SD155U2606
	Deksel for joystick PVREL med PG nippel	SD155U2600
Joystick 	Joystick PROF1 3 prop. 1 on/off	SD162F1107
Kabel 	Kabel 4m for PROF1/PVRE	SD162B6014
	Spole kontakt Hirschmann m/3m kabel	MU7000181 212280300
	Spole kontakt AMP Junior m/4m kabel	SD157B4994



Marineserte ventiler

Materiale: Spak, spak-hus og sleidekontroll i rustfri materiale

Utgaver: med dreiesleide og med fjær/retur

Varenummer	Beskrivelse	Port størrelser	Maks mengde [l/min]
HL60000302US	Retnings ventil HC-10 Sylinder sleide, fjær/retur	7/8'' UNF	55
HL60000201US	Retnings ventil HC-10 Motor sleide, fjær/retur	7/8'' UNF	55
HL60000112US	Retnings ventil HC-10 Sylinder sleide, Dreiesleide	7/8'' UNF	55
HL60000228US	Retnings ventil HC-10 Motor sleide, Dreiesleide	7/8'' UNF	55
HL60000110US	Retnings ventil HC-4 Sylinder sleide, fjær/retur	3/4'' UNF	80
HL60000136US	Retnings ventil HC-4 Motor sleide, fjær/retur	3/4'' UNF	80
HL60000125US	Retnings ventil HC-4 Sylinder sleide, Dreiesleide	3/4'' UNF	80
HL60000196US	Retnings ventil HC-4 Motor sleide, Dreiesleide	3/4'' UNF	80

* Pris per forespørsel

Vanlige dreiesleideventiler

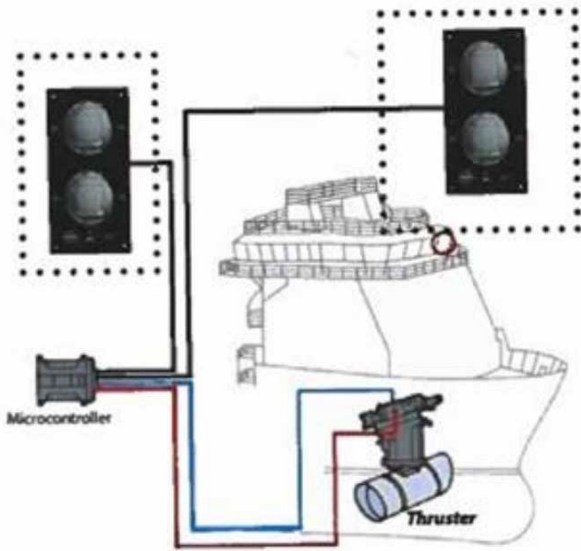


Varenummer	Beskrivelse	Port størrelser	Listepris
AA3354	Dreiesleideventil rørmontert 3/8"	3/8''	2 029
GTQ451RTL	Dreiesleideventil Q45 1/2" sylinder sleide	1/2''	2 042
GTQ454RTL	Dreiesleideventil Q45 1/2" motor sleide	1/2''	2 042
GTQ951RTL	Dreiesleideventil Q95 3/4" sylinder sleide	3/4''	3 005

Tilbehør til dreiesleideventiler

Varenummer	Beskrivelse	Listepris
GT060002286299	Spak for Q25/45 for sleidekontr. A1-A2	48
GT060002701399	Spak for Q80/95 for sleidekontroll A1-A2	178
GT060002564799	Videreføringsplugg Q45	165
GT060002790899	Videreføringsplugg Q95	309

Styrepanel for sidepropell

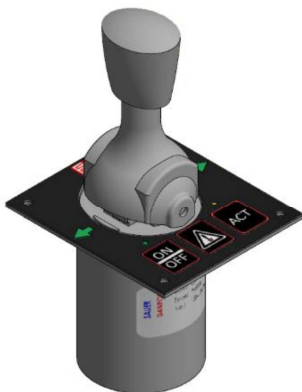


Standard pakken inkluderer:

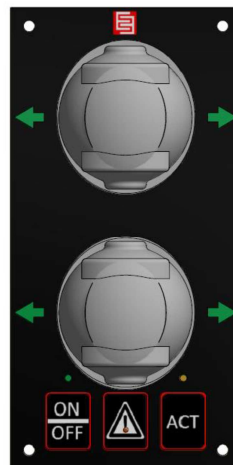
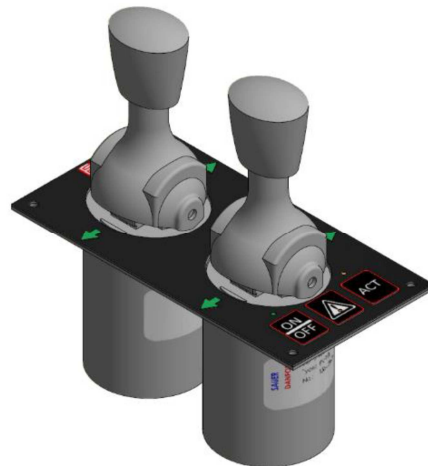
- Danfoss joysticker PVRL med bunnkessel.
- Monteringsplate med 2 trykknapper, LED dioder og pakninger.

Tiltenkt løsning er fokusert mot Plug&Play ledningsnett.

Styrepanel enkel



Styrepanel dobbel



7. VANN/OLJEKJØLERE

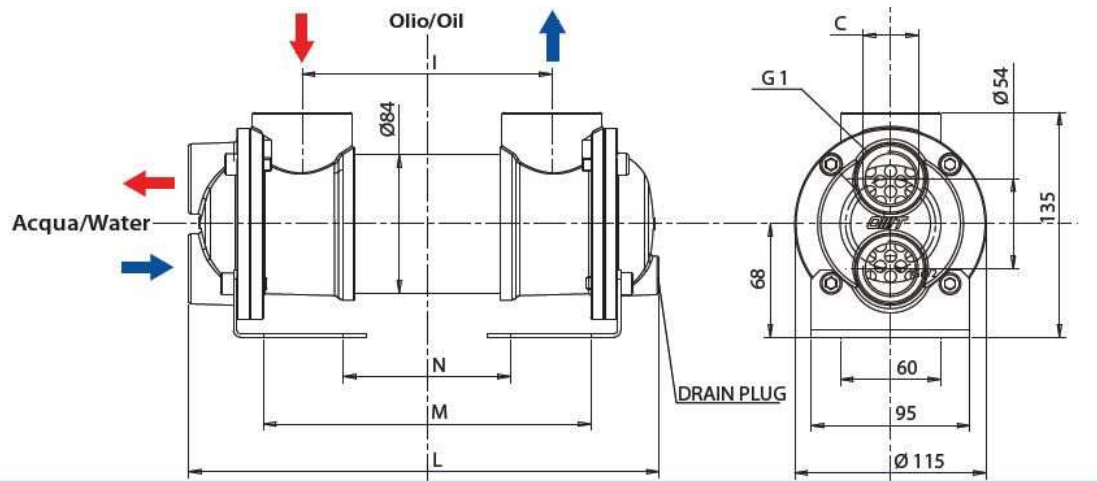
Tilpasset til marine applikasjoner



Varenummer	Beskrivelse	Listepris
LUSAW080150S2	Oljekjøler, olje-vann SAW080-150-S2 4kW	7 768
LUSAW080310S2	Oljekjøler, olje-vann SAW080-310-S2 7kW	8 948
LUSAW080560S2	Oljekjøler, olje-vann SAW080-560-S2 14kW	10 823
LUSAW081715S2	Oljekjøler, olje-vann SAW081-715-S2 17kW	14 883
LUSAW081870L2	Oljekjøler, olje-vann SAW081-870-L2 20kW	12 016
LUSAW081870S2	Oljekjøler, olje-vann SAW081-870-S2 20kW	15 231
LUSAW130285S4	Oljekjøler, olje-vann SAW130-285-S4 19kW	13 740
LUSAW130535S4	Oljekjøler, olje-vann SAW130-535-S4 33kW	15 717
LUSAW130845S4	Oljekjøler, olje-vann SAW130-845-S4 48kW	17 573
LUSAW1301145S4	Oljekjøler, olje-vann SAW130-1145-S4 70kW	19 420

Materiali / Materials

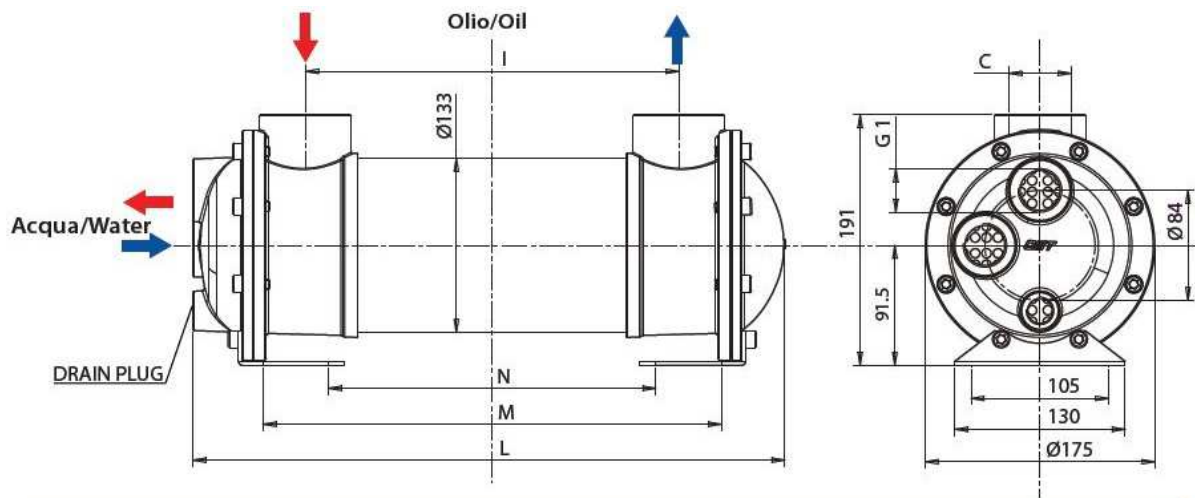
Fondi/Covers	Guarnizione/Seal	Piastra Tubiera Tubes plate	Deflettori/Baffles	Tubi/Tubes	Mantello/Shell
CuZn40	Viton	CuZn40	Ottone / Brass	CuNi10	Acciao/Steel



Tab. A

Codice/Code	C (BSP)	I (mm)	L (mm)	M (mm)	N (mm)	L/min (Oil)	KW (***)	m ²	Kg
SAW080-150-S2	1"	150	282,5	196	100	30 - 80	4 - 4,5	0,26	4,50
SAW080-310-S2	1"	310	442,5	356	261	20 - 60	7 - 8	0,45	6,50
SAW081-310-L2	1" 1/2	310	442,5	356	261	50 - 100	7 - 8	0,45	6,50
SAW080-560-S2	1"	560	692,5	606	511	30 - 80	14 - 16	0,73	9,00
SAW081-560-L2	1" 1/2	560	692,5	606	511	80 - 130	14 - 16	0,73	9,00
SAW081-715-S2	1" 1/2	715	847,5	761	666	40 - 90	17 - 20	0,91	11,00
SAW081-715-L2	1" 1/2	715	847,5	761	666	100 - 160	17 - 20	0,91	11,00
SAW081-870-S2	1" 1/2	870	1002,5	916	821	60 - 110	20 - 23	1,09	12,50
SAW081-870-L2	1" 1/2	870	1002,5	916	821	140 - 190	20 - 23	1,09	12,50

*** Olio / Oil = 50 °C, 45 cSt, H₂O = 15 °C



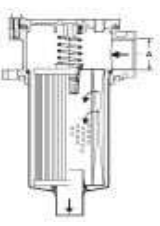
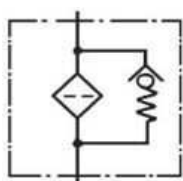
Tab. A

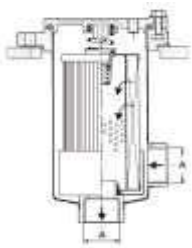
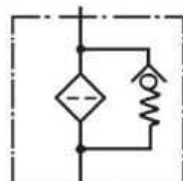
Codice/Code	C (BSP)	I (mm)	L (mm)	M (mm)	N (mm)	L/min (Oil)	KW (***)	m ²	Kg
SAW130-285-S4	1" 1/2	285	451	350	250	30 - 100	19 - 23	1,10	16,50
SAW130-535-S4	1" 1/2	535	701	600	500	40 - 130	33 - 37	1,85	22,50
SAW131-520-L4	2"	520	686	585	485	120 - 250	33 - 37	1,85	23,00
SAW130-845-S4	1" 1/2	845	1011	910	810	80 - 250	48 - 56	2,77	30,60
SAW131-830-L4	2"	830	996	895	795	200 - 400	48 - 56	2,77	31,00
SAW130-1145-S4	1" 1/2	1145	1311	1209	1109	30 - 120	70 - 75	3,67	40,00
SAW131-1130-L4	2"	1130	1296	1195	1095	200 - 500	70 - 75	3,67	39,50

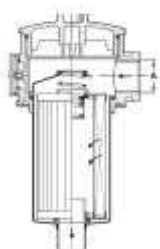
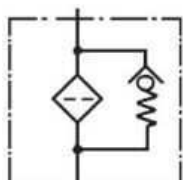
*** Olio / Oil = 50 °C, 46 cSt, H₂O = 15 °C


10. FILTER, TANKTILBEHØR

Returfilter

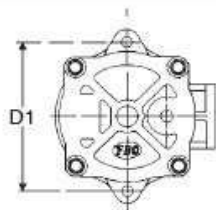
FIO – Returfilter. Returingang over tank-lokk.							
Filtertype	Vare nummer	Beskrivelse	Maks flow [l/min]	Element type	Tilkobling [BSP]	Symbol	Listepris
	P766449	Returfilter FIO 60	40	CR 60...	3/4"		533
	P766451	Returfilter FIO 100	65	CR 100	1"		588
	P766453	Returfilter FIO 180	120	CR 180	1 ¼"		1102
	P766456	Returfilter FIO 325	200	CR 325	1 1/2"		1611
	P766458	Returfilter FIO 500	400	CR 500	2"		1966

FIR – Returfilter. Returingang under tank-lokk.							
Filtertype	Vare nummer	Beskrivelse	Maks flow [l/min]	Element type	Tilkobling [BSP]	Symbol	Listepris
	P766481	Returfilter FIR 60	40	CR 60...	3/4"		1228
	P766482	Returfilter FIR 100	65	CR 100	1"		1247
	P766678	Returfilter FIR 180	120	CR 180	1 ¼"		1976
	P766483	Returfilter FIR 500	400	CR 500	2"		2926

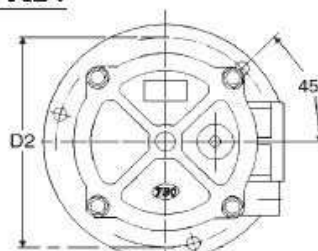
FIR – Returfilter. Returingang over tank-lokk med mulighed for pustefilter							
Filtertype	Vare nummer	Beskrivelse	Maks flow [l/min]	Element type	Tilkobling [BSP]	Symbol	Listepris
	P766597	Returfilter FIS 60	40	CR 60...	3/4"		881
	P766598	Returfilter FIS 100	65	CR 100	1"		951
	P766599	Returfilter FIS 150	120	CR 150	1 ¼"		1066
	P766595	Returfilter FIS 200	200	CR 200	1 1/2"		1355

Elementer	Vare nummer	Beskrivelse	Listepris
	P171527	Element CR 60/1	179
	P171533	Element CR 100/1	200
	P171840	Element CR 150/1	332
	P171539	Element CR 180/1	369
	P766609	Element CR 200/1	479
	P171557	Element CR 325/1	560
	P171569	Element CR 500/1	691

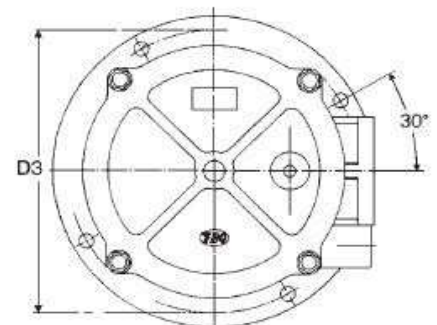
DIV. MÅL RETURFILTRE.



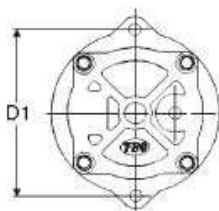
FIO (T) 30 - 60 - 100



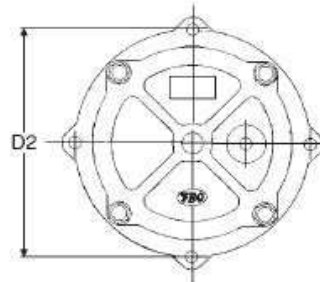
FIO 180



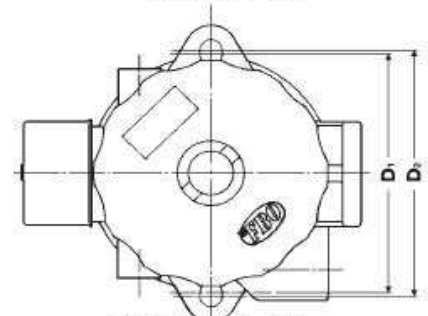
FIO 325 - 500



FIR (T) 30 - 60 - 100

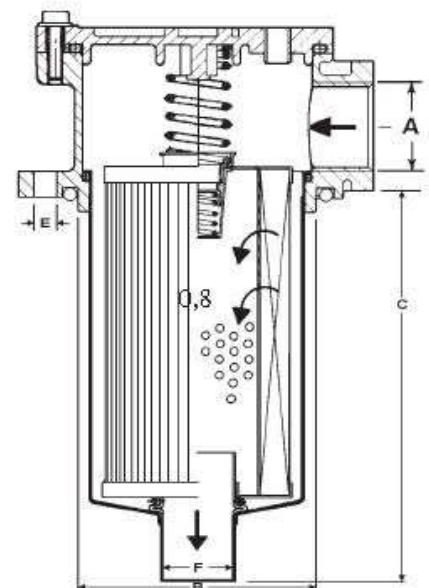


FIR 180 - 330 - 500

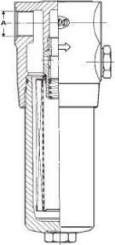
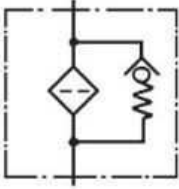


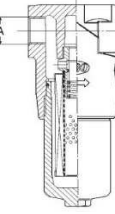
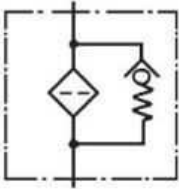
FIS 60 - 100 - 150

FILTERTYPE	B	C	D1	D2	D3	E	F	VEKT
	mm	mm	mm	mm	mm	mm	mm	kg
FIO 30	67	78	90	-	-	6,4	25	0,5
FIO 60	90	100	115	-	-	8,4	28	0,8
FIO 100	90	145	115	-	-	8,4	28	0,9
FIO 180	131	230	-	175	-	10,5	40	2,5
FIO 325	175	242	-	-	220	10,5	50	4,3
FIO 500	175	242	-	-	220	10,5	63,5	4,5
FIR	30	88	61	100	-	-	7	40
FIR 60	110	68	126	-	-	9	52	1,3
FIR 100	110	110	126	-	-	9	54	1,5
FIR 180	156	176	-	175	-	9	63	3,0
FIR 325	204	174	-	220	-	9	71	4,8
FIR 500	204	168	-	220	-	9	78	5,5
FIS 60	86	104	112	116	-	11	28	1,0
FIS 100	86	150	112	116	-	11	28	1,2
FIS 150	86	235	112	116	-	11	40	1,4



Høytrykks Filter

AP280 – høytrykkfilter maks. 420 bar.							
Filtype	Vare nummer	Beskrivelse	Maks flow [l/min]	Element type	Tilkobling [BSP]	Symbol	Listepris
	P766377	Høytrykksfilter AP 358	30	CM 230	1/2"		3000
	P766378	Høytrykksfilter AP 359	50	CM 250	1/2"		3168
	P766379	Høytrykksfilter AP 360	90	CM 290	3/4"		3150

AP420 – høytrykkfilter maks. 420 bar.							
Filtype	Vare nummer	Beskrivelse	Maks flow [l/min]	Element type	Tilkobling [BSP]	Symbol	Listepris
	P766428	Høytrykksfilter AP 362	80	AP 452	3/4"		3801
	P766429	Høytrykksfilter AP 363	120	AP 453	1"		4242
	P766430	Høytrykksfilter AP 364	180	AP 454	1 1/4"		6578

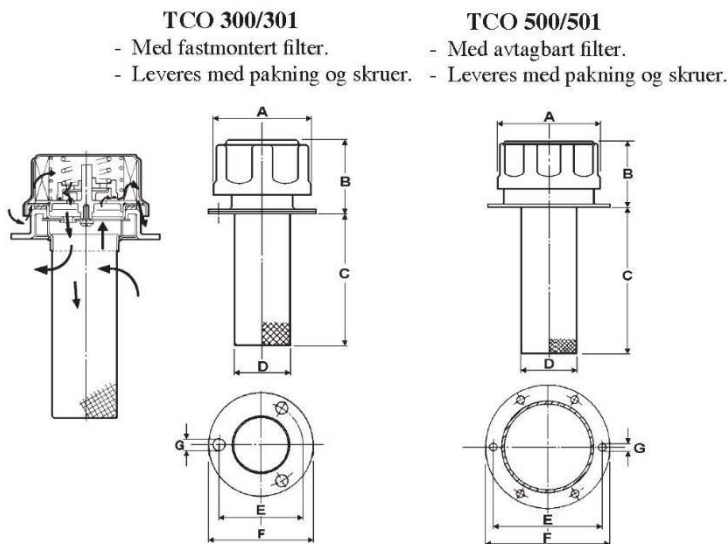
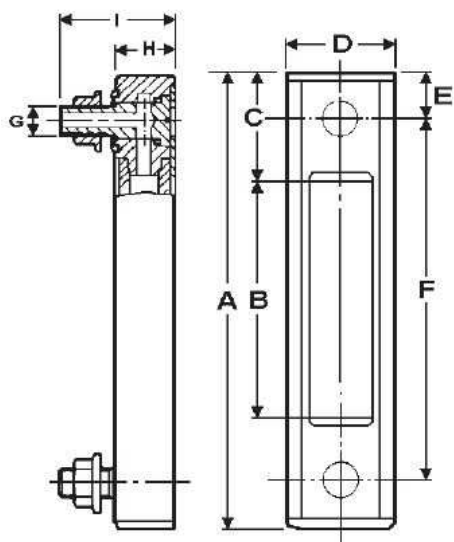
Elementer CM og AP for trykkfiltre		
Vare nummer	Beskrivelse	Listepris
P171714	Element CM 230.02 10 My ABS	588
P165006	Element CM 250/02 10 My ABS	549
P165015	Element CM 290.02 10 My ABS	912
P171735	Element AP 452.52 10 My ABS	912
P171738	Element AP 453.52 10 My ABS	832
P171741	Element AP 454.52 10 My ABS	1140



Nivåglass og påfyllingslokk

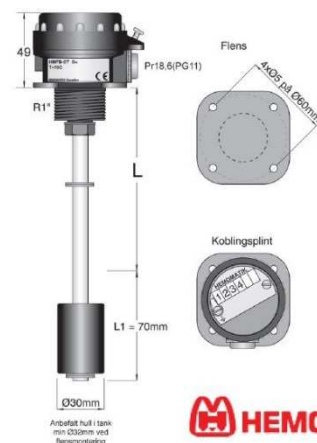
Nivåglass LVO / nivåglass med termometer LVOT										
Vare Nummer	Beskrivelse	A [mm]	B [mm]	C [mm]	D [mm]	E [mm]	F [mm]	G [mm]	H [mm]	Liste pris
FB150076100	Nivåglass LVO 76/10	107	31	22,5	40	15,5	76	M10	20	351
FB151123100	Nivåglass LVOT 76/10	107	31	22,5	40	15,5	76	M10	20	382
FB151127100	Nivåglass LVO 127/10	158	82	22,5	40	15,5	127	M10	20	407
FB152127100	Nivåglass LVOT 127/10	158	82	22,5	40	15,5	127	M10	20	420
FB151127120	Nivåglass LVO 127/12	158	82	22,5	40	15,5	127	M12	20	407
FB152127120	Nivåglass LVOT 127/12	158	82	22,5	40	15,5	127	M12	20	420
FB151254120	Nivåglass LVO 254/12	209	209	22,5	40	15,5	254	M12	20	888
FB150254120	Nivåglass LVOT 254/12	209	209	22,5	40	15,5	254	M12	20	888

Påfyllingslokk TCO301 og TCO500										
Vare Nummer	Beskrivelse	Maks l/min	A [mm]	B [mm]	C [mm]	D [mm]	E [mm]	F [mm]	G [mm]	Listepris
FB130301000	Puste påfyllingslokk 10My TCO 301	270	46	35	63	28	41	51	5,5	244
FB130500000	Puste påfyllingslokk 40My TCO 500	500	70	46	100	38	73	84	5,5	325
FB130501000	Puste påfyllingslokk 10 My TCO 500	470	70	46	100	38	73	84	5,5	340



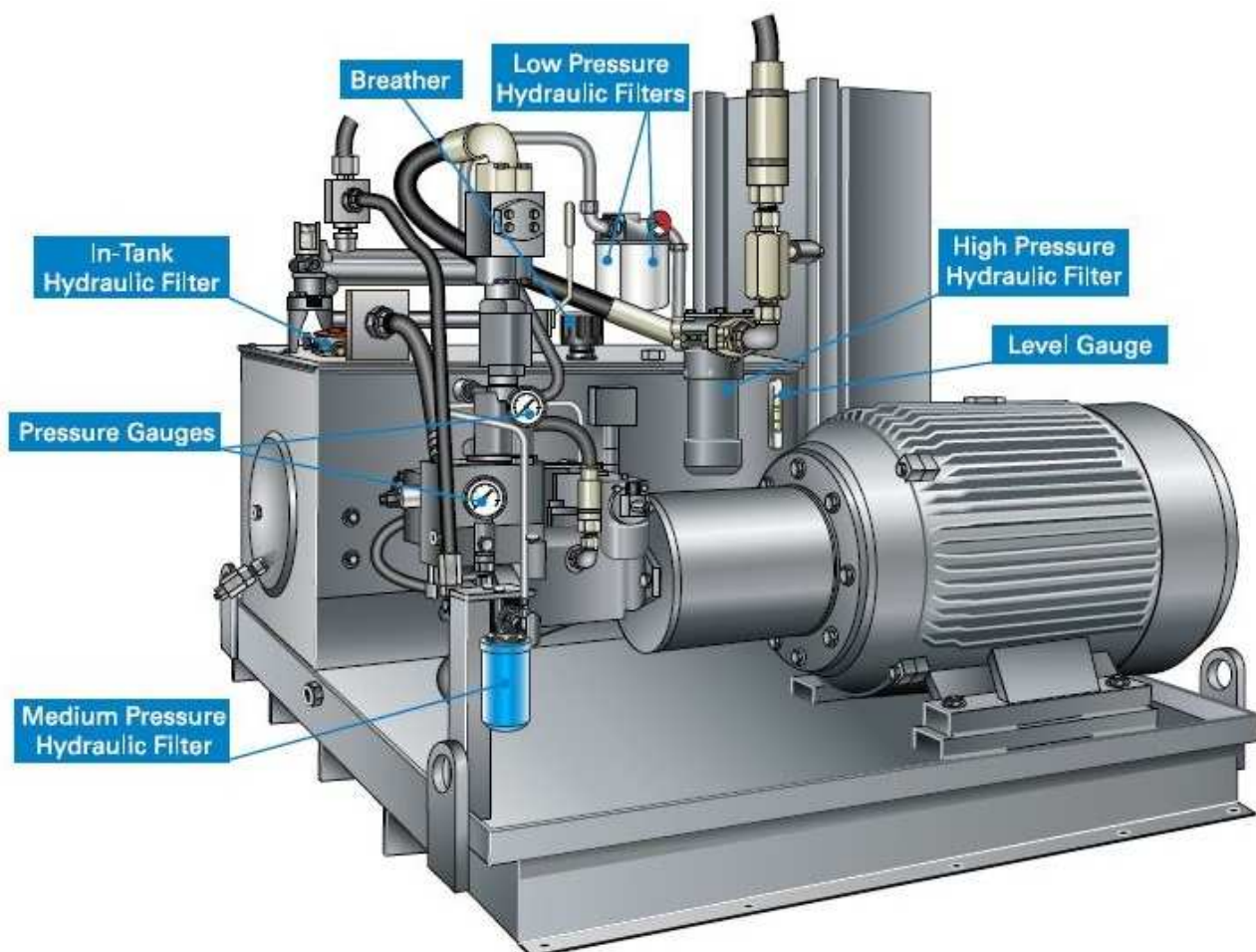
Vare Nummer	Beskrivelse	Listepris
HE0150T080	Nivå/tempvakt 150mm 75 gr.	2051
HE0200T080	Nivå/tempvakt 200mm 75 gr.	2051
HE0250T080	Nivå/tempvakt 250mm 75 gr.	2051
HE0300T080	Nivå/tempvakt 300mm 75 gr.	2051
HE0400T080	Nivå/tempvakt 400mm 75 gr.	2051
HE0500T080	Nivå/tempvakt 500mm 75 gr.	2051
HE0600T080	Nivå/tempvakt 600mm 75 gr.	2459
HE0650T080	Nivå/tempvakt 650mm 75 gr.	2591
HE0750T080	Nivå/tempvakt 750mm 75 gr.	2591
HE1000T75	Nivå/tempvakt 1000mm 75 gr.	3000

NIVÅVAKT/TEMP.VAKT.



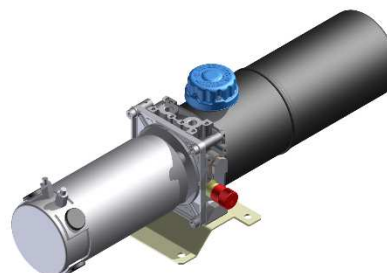
HEMOMATIK

Plassering av filter i et hydraulisk system – eksempel



11. AGGREGATER

12/24V DC Start motor



Varenummer.	Volt [V]	Turtall [rev/min]	Effekt [Kw]	Pumpe [ccm]	Tank [liter]	Trykk [bar]	Mengde [liter/min]	Listepris
HO0120012V00503	12	2300	0,5	1,20	3	110	2,7	6 827
HO0120024V00503	24	2300	0,5	1,20	3	110	2,7	6 827
HO0320012V00505	12	2300	0,5	3,20	5	40	7,3	7 216
HO0320024V00505	24	2300	0,5	3,20	5	40	7,3	7 216
HO0120012V00805	12	3300	0,8	1,20	5	140	3,6	7 216
HO0120024V00805	24	3300	0,8	1,20	5	140	3,6	7 216
HO0200012V00807	12	3300	0,8	2,00	7	80	6,0	7 216
HO0200024V00807	24	3300	0,8	2,00	7	80	6,0	7 216
HO0200012V01607	12	2650	1,6	2,00	7	180	5,3	7 367
HO0320012V01610	12	2650	1,6	3,20	10	115	8,4	7 433
HO0425012V02110	12	1700	2,1	4,25	10	180	7,2	10 625
HO0320024V02210	24	2600	2,2	3,20	10	165	8,3	7 433
HO0500024V02215	24	2600	2,2	5,00	15	105	13,0	7 605
HO0320024V02215	24	2600	3,0	3,20	15	180	10,0	11 385

12/24V DC kontinuerlig drift



Varenummer.	Volt [V]	Turtall [rev/min]	Effekt [Kw]	Pumpe [ccm]	Tank [liter]	Trykk [bar]	Mengde [liter/min]	Listepris
EE1809011	12/24	1500 / 3000	0,3 / 0,6	1,60	2	90	2,4 / 4,8	13 504
EE1809012	24	1500	0,3	1,60	2	90	2,4	13 523
HO0320012V01110	12	2200	1,1	3,20	10	95	7,0	37 942

230V AC motor 1-fas



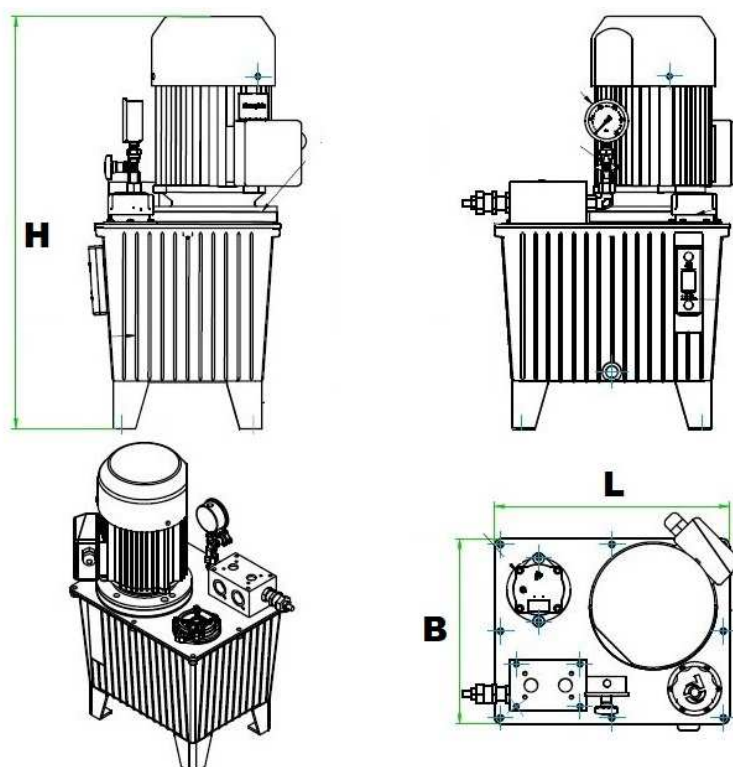
Varenummer.	Volt [V]	Turtall [rev/min]	Elmotor [Kw]	Pumpe [ccm]	Tank [liter]	Trykk [bar]	Mengde [liter/min]	Listepris
HO0050230VF0202	230	1400	0,25	0,50	2	210	0,7	9 867
HO0120230VF0403	230	1400	0,37	1,20	3	135	1,7	9 500
HO0120230VF0603	230	1400	0,55	1,20	3	195	1,7	10 089
HO0160230VF0804	230	1400	0,75	1,60	4	200	2,2	11 125
HO0320230VF0807	230	1400	0,75	3,20	7	100	4,4	11 557
HO0250230VF1105	230	1400	1,10	2,50	5	190	3,5	12 842
HO0320230VF1107	230	1400	1,10	3,20	7	150	4,4	13 433
HO0320230VF1507	230	1400	1,50	3,20	7	200	4,4	14 135
HO0425230VF1510	230	1400	1,50	4,25	10	155	5,9	14 199
HO0500230VF2210	230	1400	2,20	5,00	10	190	7,0	16 318
HO0600230VF2215	230	1400	2,20	6,00	15	160	8,4	16 318
HO0500230VF2213	230	1400	2,20	5,00	13 V	190	7,0	18 456

230/400V AC motor 3-fas



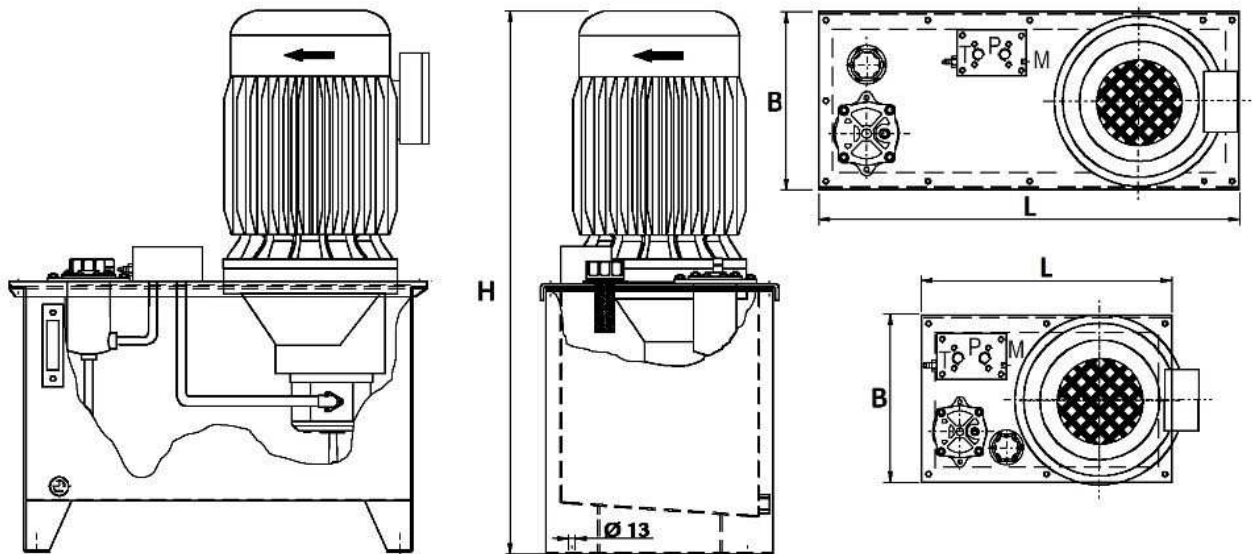
HO0050230V00202	230	1400	0,25	0,50	2	210	0,7	6 178
HO0120230V00403	230	1400	0,37	1,20	3	135	1,7	5 465
HO0120230V00603	230	1400	0,55	1,20	3	195	1,7	8 928
HO0320230V00807	230	1400	0,75	3,20	7	100	4,4	10 471
HO0160230V00804	230	1400	0,75	1,60	4	200	2,2	10 039
HO0320230V01107	230	1400	1,10	3,20	7	150	4,4	10 637
HO0320230V01107V	230	1400	1,10	3,20	7 V	150	4,4	11 579
HO0320230V01507	230	1400	1,50	3,20	7	200	4,4	10 790
HO0425230V01510	230	1400	1,50	4,25	10	155	5,9	10 855
HO0500230V02210	230	1400	2,20	5,00	10	190	7,0	12 226
HO0600230V02215	230	1400	2,20	6,00	15	160	8,4	12 226
HO0500230V02213	230	1400	2,20	5,00	13 V	190	7,0	14 364
HO0740230V03015	230	1400	3,00	7,40	15	175	10,4	14 114
HO0980230V04023	230	1400	4,00	9,80	23	175	13,7	16 712
HO0980230V04025	230	1400	4,00	9,80	25 V	175	13,7	17 187

Aggregater med aluminiumstank og tannhjulspumpe



Varenummer	Pumpe [ccm]	Mengde [l/min]	Volum [liter]	Elmotor [Kw]	Trykk (kontinuerlig) [bar]	Maks trykk* (intermittent) [bar]	B [mm]	H [mm]	L [mm]	Listepris
EEAL020003220	2,0	3	20	1,10	220	250	291	647	369	25 190
EEAL020005132	3,3	5	20	1,10	132	150	291	647	369	25 290
EEAL020005180	3,3	5	20	1,50	180	210	291	543	369	25 590
EEAL030009146	6,0	9	30	2,2	146	170	341	813	491	34 800
EEAL030009200	6,0	9	30	3,0	200	220	341	813	491	35 600
EEAL030012150	8,0	12	30	3,0	150	180	341	813	491	35 700
EEAL030012200	8,0	12	30	4,0	200	230	341	821	491	38 300
EEAL044016150	10,6	16	44	4	150	180	424	851	525	41 600
EEAL044016206	10,6	16	44	5,5	206	220	424	918	525	45 300
EEAL044022150	14,6	22	44	5,5	150	180	424	918	525	45 500
EEAL044022205	14,6	22	44	7,5	206	220	424	918	525	47 200
EEAL070022150	14,6	22	70	5,5	150	180	474	968	615	49 100
EEAL070022205	14,6	22	70	7,5	205	240	474	968	615	50 800
EEAL070027122	18,0	27	70	5,5	122	150	474	968	615	49 200
EEAL070027165	18,0	27	70	7,5	165	190	424	968	615	50 900
EEAL070035188	23,3	35	70	11,0	188	220	474	1073	615	59 200

Aggregater med Stål-tank

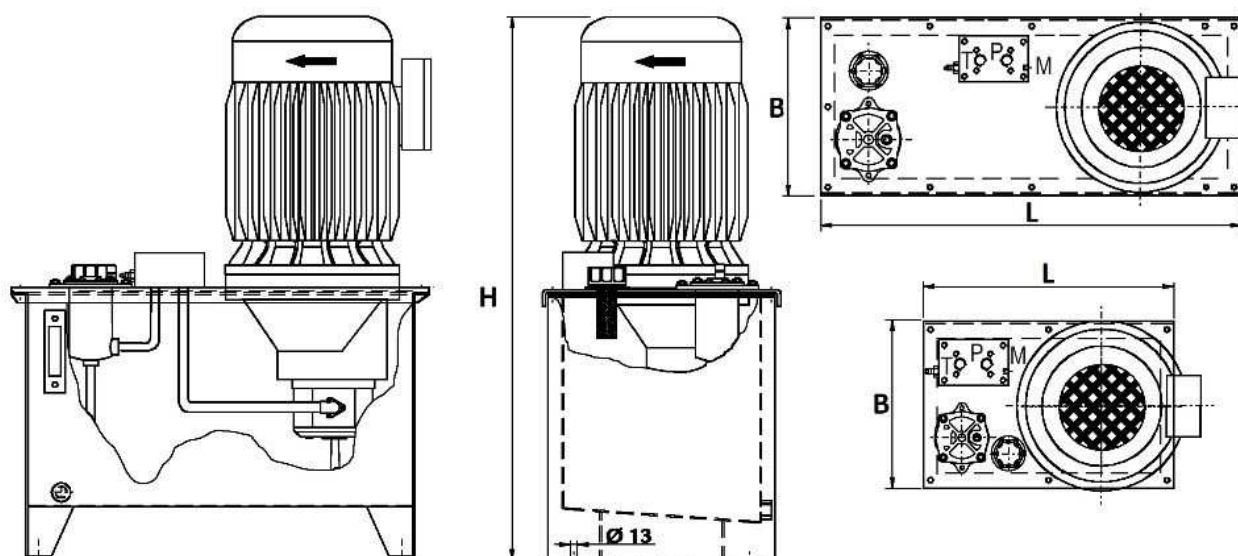


Varenummer	Pumpe [ccm]	Mengde [l/min]	Volum [liter]	Elmotor [Kw]	Trykk (kontinuerlig) [bar]	Maks trykk* (intermittent) [bar]	B [mm]	H [mm]	L [mm]	Listepris
EQ005180025	3,3	4,6	25	1,5	195	235	302	634	505	27 176
EQ007160025	5	7,2	25	1,5	125	150	302	634	505	27 176
EQ005275025	3,3	4,6	25	2,2	240	275	302	669	505	27 228
EQ007200025	5	7,2	25	2,2	185	200	302	669	505	27 228
EQ009275025	6	8,4	25	3	210	260	302	669	505	31 592
EQ012200025	8	11,2	25	3	155	200	302	669	505	31 592
EQ015155025	10,6	14,8	25	3	120	155	302	669	505	31 592
EQ021110025	14,6	20,4	25	3	85	110	302	669	505	31 592
EQ009275040	6	8,4	40	3	210	260	302	799	505	33 717
EQ012200040	8	11,2	40	3	155	200	302	799	505	33 717
EQ015155040	10,6	14,8	40	3	120	155	302	799	505	33 717
EQ021110040	14,6	20,4	40	3	85	110	302	799	505	33 717
EQ012275040	8	11,2	40	4	210	260	302	814	505	35 800
EQ015210040	10,6	14,8	40	4	160	210	302	814	505	35 800
EQ021150040	14,6	20,4	40	4	115	150	302	814	505	35 800
EQ009300070	6	8,4	70	4	275	300	412	799	818	35 973
EQ012275070	8	11,2	70	4	210	260	412	799	818	35 973
EQ015210070	10,6	14,8	70	4	160	210	412	799	818	35 973
EQ021150070	14,6	20,4	70	4	115	150	412	799	818	35 973
EQ021150110	14,6	20,4	110	4	115	150	412	818	818	36 185
EQ026120110	18	20,4	110	4	95	120	412	818	818	36 185
EQ012300040	8	11,2	40	5,5	275	300	302	864	505	36 616
EQ015285040	10,6	14,8	40	5,5	220	285	302	864	505	36 616
EQ021205040	14,6	20,4	40	5,5	160	202	302	864	505	36 616
EQ026165040	18	25,2	40	5,5	130	165	302	864	505	36 874
EQ012300070	8	11,2	70	5,5	275	300	412	849	818	38 731
EQ015285070	10,6	14,8	70	5,5	220	285	412	849	818	38 731
EQ021205070	14,6	20,4	70	5,5	160	205	412	849	818	38 731
EQ026165070	18	28,2	70	5,5	130	165	412	849	818	38 731
EQ033130070	23,3	32,6	70	5,5	100	130	412	849	818	38 731

EQ021205110	14,6	20,4	110	5,5	160	205	412	989	818	40 874
EQ026165110	18	25,2	110	5,5	130	165	412	989	818	40 874
EQ033130110	23,3	32,6	110	5,5	100	130	412	989	818	41 114
EQ015300040	10,6	14,8	40	7,5	275	300	302	904	505	41 800
EQ021275040	14,6	20,4	40	7,5	220	275	302	904	505	41 800
EQ026225040	18	25,2	40	7,5	175	225	302	904	505	41 800
EQ015300070	10,6	14,8	70	7,5	275	300	412	889	818	42 200
EQ021275070	14,6	20,4	70	7,5	220	275	412	889	818	42 200
EQ026225070	18	25,2	70	7,5	175	225	412	889	818	42 200
EQ033175070	23,3	32,6	70	7,5	135	175	412	889	818	42 200
EQ015300110	10,6	14,8	110	7,5	275	300	412	1029	818	42 800
EQ021275110	14,6	20,4	110	7,5	220	275	412	1029	818	42 800
EQ026225110	18	25,2	110	7,5	175	225	412	1029	818	42 800
EQ033175110	23,3	32,6	110	7,5	135	175	412	1029	818	42 800
EQ034165110	24	33,6	110	7,5	130	165	412	1029	818	42 800
EQ042135110	30	42	110	7,5	105	135	412	1029	818	42 800
EQ026250070	18	25,2	70	11	225	250	412	962	818	49 737
EQ033190070	23,3	32,6	70	11	175	190	412	962	818	49 737
EQ026250110	18	25,2	110	11	225	250	412	1102	818	49 737
EQ033190110	23,3	32,6	110	11	175	190	412	1102	818	49 737
EQ034250070	24	33,6	70	11	195	240	412	962	818	49 737
EQ042200070	30	42	70	11	155	200	412	962	818	49 737
EQ034250110	24	33,6	110	11	195	240	412	1102	818	52 902
EQ042200110	30	42	110	11	155	200	412	1102	818	52 902
EQ051165110	36	50,4	110	11	130	165	412	1102	818	52 902
EQ062135110	44	61,6	110	11	105	135	412	1102	818	52 902
EQ034275070	24	33,6	70	15	250	275	412	1017	818	54 246
EQ042270070	30	42	70	15	210	270	412	1017	818	54 246
EQ051225070	36	50,4	70	15	175	225	412	1017	818	54 246
EQ062185070	44	61,6	70	15	145	185	412	1017	818	54 246
EQ042270110	30	42	110	15	210	270	412	1157	818	56 300
EQ051225110	36	50,4	110	15	175	225	412	1157	818	56 300
EQ062185110	44	61,6	110	15	145	185	412	1157	818	56 300
EQ042275070	30	42	70	18,5	250	275	412	1047	818	59 300
EQ051250070	36	50,4	70	18,5	220	250	412	1047	818	59 300
EQ042275110	30	42	110	18,5	250	275	412	1187	818	59 800
EQ051250110	36	50,4	110	18,5	220	250	412	1187	818	59 800
EQ062225110	44	61,6	110	18,5	182	225	412	1187	818	59 800
EQ079180110	56	78,4	110	18,5	140	180	412	1187	818	59 800
EQ051245110	36	50,4	110	22	225	250	412	1227	818	63 598
EQ062220110	44	61,6	110	22	200	225	412	1227	818	63 598
EQ079200110	56	78,4	110	22	165	200	412	1227	818	63 598

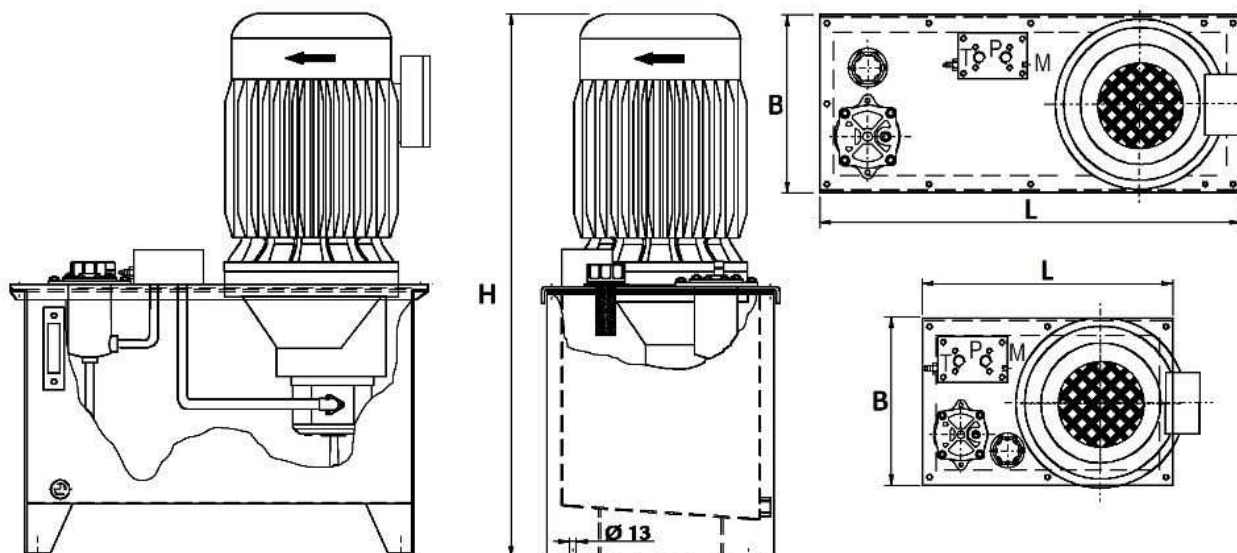
Kranaggregater

Fast stempelpumpe

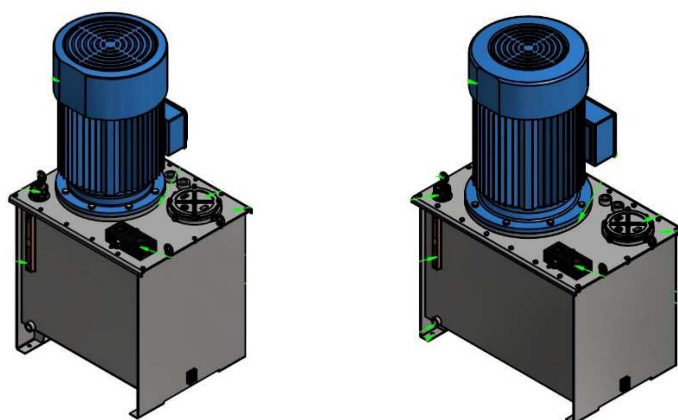


Varenummer	Pumpe [ccm]	Mengde [l/min]	Volum [liter]	Elmotor [kW]	Trykk (kontinuerlig) [bar]	Maks trykk* (intermittent) [bar]	B [mm]	H [mm]	L [mm]	Listepris
EEC017260110L	12	17	110	7,5	260	320	416	1014	816	66 918
EEC017380110L	12	17	110	11,0	350	350	416	1104	816	68 757
EEC026250110L	17	26	110	11,0	250	310	416	1104	816	74 775
EEC026250160L	17	26	160	11,0	250	310	468	1207	816	82 381
EEC026345160L	17	26	160	15,0	345	400	468	1262	816	86 000
EEC037300160L	25	37	160	18,5	300	370	468	1292	816	88 563
EEC037350160S	25	37	160	22,0	350	400	468	1329	816	91 913
EEC047280160L	32	47	160	22,0	280	340	468	1329	816	94 548
EEC047280250L	32	47	250	22,0	280	340	651	1416	768	95 054
EEC047380250L	32	47	250	30,0	380	400	651	1449	768	115 556
EEC060300250L	41	60	250	30,0	300	370	651	1449	768	118 652
EEC066275250L	45	66	250	30,0	275	330	651	1449	768	122 650
EEC066340250L	45	66	250	37,0	340	400	651	1466	768	123 000
EEC074300250L	50	74	250	37,0	300	370	651	1466	768	123 000
EEC074365250L	50	74	250	45,0	365	400	651	1501	768	129 125
EEC093290250L	63	93	250	45,0	290	400	651	1501	768	135 398
EEC093350350L	63	93	350	55,0	350	400	671	1557	1001	141 187
EEC118280350L	80	118	350	55,0	280	340	671	1557	1001	145 750

Variabel pumpe LS



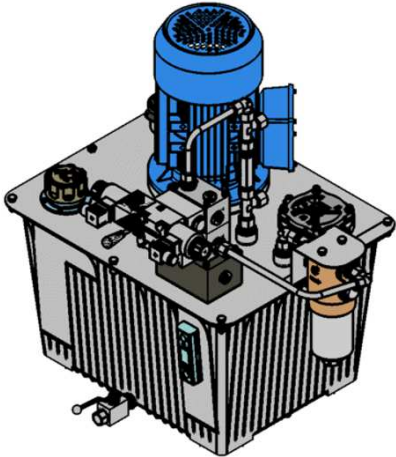
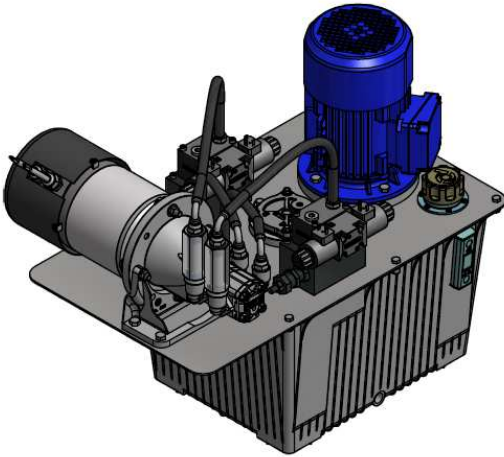
Varenummer	Pumpe [ccm]	Mengde [l/min]	Volum [liter]	Elmotor [kW]	Trykk (kontinuerlig) [bar]	Maks trykk* (intermittent) [bar]	B [mm]	H [mm]	L [mm]	Listepris
EEV044260160LS	30	44	160	18,5	255	280	468	1329	816	103 000
EEV066275250LS	45	66	250	30,0	275	300	651	1449	768	127 908
EEV074300250LS	50	74	250	37,0	300	320	651	1466	768	138 961
EEV093290250LS	60	87	250	45,0	290	320	651	1501	768	155 000
EEV093320350LS	60	87	350	55,0	320	320	671	1557	1001	166 307
EEV108305350LS	75	108	350	55,0	305	350	671	1557	1001	179 000



Hydrauliske aggregater for styremaskin

Egil Eng er en ledende leverandør av aggregater for styremaskin. Vi kan levere standere eller skreddersydde løsninger.

Eksempelprosjekter:

	
HPU 14,7 l/min, 60bar, tank 44l, 1,5kW med styreventiler	HPU 2 x 5 l/min 80bar, tank 44l, 1,5kW både AC og DC el.motor med styreventiler

Aggregatene kan leveres med proporsjonale retningsventiler eller ON/OFF, både med trykk og returfilter, elektrisk nivå/tempvakt, håndpumpe for nød-kjøring, elektronisk styring og flere andre alternativer.

Vi kan tilby DNV sertifiserte pumper.

Vi sørger for komplett og oversiktlig dokumentasjon.

Patronventiler og hus i rustfri utførelse



Patronventiler og blokker fra Flucom, kan nå leveres i rustfritt material AISI 316. Dette gjelder ventilens eksterne deler og kan sammen med rustfrie blokker benyttes i marine applikasjoner eller i andre korrosive miljøer. Ta kontakt for pristilbud.

Syrefaste sylindre AISI 316





VANNPUMPER

- **LANDBRUKET**
- **FISKERINÆRINGEN**
- **VEI OG ANLEGG**



FORHANDLER:



EGIL ENG & CO. AS

Mekanikk - Hydraulikk - Elektronikk - Filter

www.egileng.no - Tlf. 22 80 05 60 - firma@egileng.no